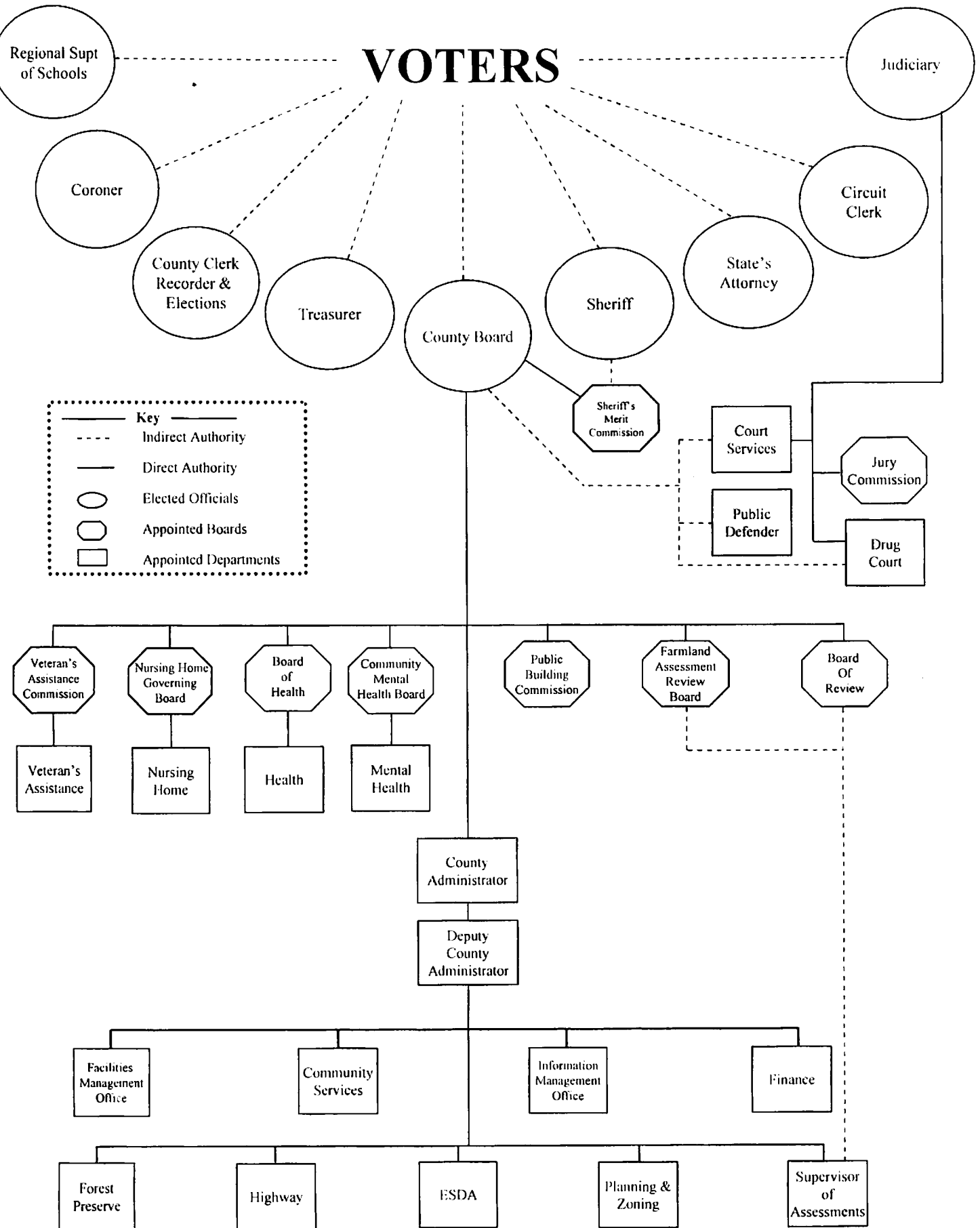


DeKalb County Government

**FY 2013
BUDGET
PLAN**

Salaries & Benefits

DeKalb County Government Organizational Chart



DEKALB COUNTY GOVERNMENT

FY 2013 BUDGET

ORGANIZATIONAL TABLE

DEPARTMENT	CLASSIFICATION	CLASS NUMBER	# OF FUNDED POSITIONS	TOTAL WEEKLY HOURS	FLSA EXEMPT	HAY GRADE	INS SLOTS
COUNTY BOARD (1110)	County Administrator	1031	1.00	40.00	Y	M5	1
	County Board Coordinator	2154	1.00	35.00	N	CT9	1
	TOTAL		2.00				2.00
FINANCE (1210)	Accounting Clerk A (Payroll)	2105	1.00	40.00	N	CT7A	1
	Accounting Clerk A (Accounts Payable)	5505	1.00	35.00	N	AC7A	1
	Accounting Supervisor	2502	1.00	40.00	N	-	1
	Administrative Assistant	5507	1.00	40.00	N	AC7A	1
	Benefits Coordinator	2150	1.00	35.00	N	CT7B	1
	Deputy Co. Administrator	1051	1.00	40.00	Y	M3	1
	Secretary A (Part Time)	2170	0.10	4.00	N	CT7B	0
	Secretary A - Webmaster	2174	1.00	40.00	N	CT7B	1
	TOTAL		7.10				7.00
INFORMATION MANAGEMENT OFFICE (1310)	Assistant Network Technician	2506	1.00	40.00	N	-	1
	Assistant Network Tech - Level II	2504	1.00	40.00	N	-	1
	Lead Assistant Network Technician	2537	1.00	40.00	N	LT13	1
	GIS Analyst	2528	1.00	40.00	N	-	1
	GIS Manager	2529	1.00	40.00	Y	AS11	1
	IMO Director	1071	1.00	40.00	Y	M2	1
	Lead Network Technician	2538	1.00	40.00	Y	-	1
	Network Infrastructure Technician	2549	1.00	40.00	N	-	1
	Network Technician	2548	1.00	40.00	N	-	1
	Project Assistant (Part Time)	2168	0.15	6.00	N	-	0
	Project Assistant - Defined (Part Time)	2167	0.85	34.00	Y	-	0
TOTAL		10.00				9.00	
ASSESSMENTS OFFICE (1410)	Administrative Clerk C	5511	1.00	35.00	N	AC6	1
	Administrative Clerk C (Part Time)	5511	0.72	29.00	N	AC6	0
	Administrative Clerk C (Part Time)	5511	0.50	20.00	N	AC6	0
	Administrative Clerk C (Part Time)	5511	0.50	17.50	N	AC6	0
	Chief Co. Assessment Official	1011	1.00	40.00	Y	M1	1
	Chief Deputy of Assessments	5523	1.00	35.00	N	AA9	1
	Mapper/Appraiser I	5563	1.00	35.00	N	AA7	1
	Mapper/Appraiser II	5564	1.00	35.00	N	AA8	1
TOTAL		6.72				5.00	
COUNTY CLERK & RECORDER (1510)	Administrative Clerk C	5511	1.00	35.00	N	AC6	1
	Administrative Secretary	5515	1.00	37.50	N	AC8	1
	Chief Deputy Recorder	5527	1.00	40.00	N	AA9	1
	County Clerk and Recorder	0511	1.00	40.00	Y	-	1
	Office Assistant A	5567	1.00	35.00	N	AC5	1
	Office Assistant B (Part Time)	5568	0.50	20.00	N	AC4	0
	Office Assistant B (Part Time)	5568	0.50	20.00	N	AC4	0
	Tax Extension Clerk	5585	1.00	40.00	N	AA8	1
	TOTAL		7.00				6.00

DEKALB COUNTY GOVERNMENT

FY 2013 BUDGET

ORGANIZATIONAL TABLE

DEPARTMENT	CLASSIFICATION	CLASS NUMBER	# OF FUNDED POSITIONS	TOTAL WEEKLY HOURS	FLSA EXEMPT	HAY GRADE	INS SLOTS
ELECTIONS (1530)	Chief Deputy of Elections	5524	1.00	35.00	N	AA8	1
	Office Assistant B	5568	2.00	70.00	N	AC4	2
	TOTAL		3.00				3.00
PLANNING & ZONING (1710)	Administrative Clerk A	5509	1.00	35.00	N	AC8	1
	Assistant Planner	5519	1.00	40.00	N	AA9	1
	Building Inspector (Part Time)	2517	0.20	8.00	N	AS9	0
	Chief Building Inspector	2515	1.00	40.00	N	-	1
	Code Enforcement Technician	5580	1.00	40.00	N	AA8	1
	Planning Director	1091	1.00	40.00	Y	M2	1
TOTAL		5.20				5.00	
REG. OFFICE OF EDUCATION (1810)	Administrative Clerk B	2125	1.00	35.00	N	CT7B	1
	Office Assistant (Part Time)	2169	0.50	17.50	N	LT4	0
	Office Assistant (Part Time)	2169	0.50	17.50	N	LT4	0
TOTAL		2.00				1.00	
TREASURER (1910)	Accounting Clerk A	5505	1.00	35.00	N	AC7A	1
	Administrative Clerk B	5510	1.00	35.00	N	AC7	1
	Chief Deputy Treasurer	5530	1.00	35.00	N	AA9	1
	Office Assistant B	5568	0.70	24.50	N	AC4	0
	Treasurer	0551	1.00	40.00	Y	-	1
TOTAL		4.70				4.00	
JUDICIARY (2210)	Bailiffs (<30 hrs/week/person)	2145	4.00	140.00	N	-	0
	Chief Bailiff	2153	1.00	37.50	N	AS7	1
	Conflict Attorney (4 Part Time)	2519	1.00	40.00	Y	-	4
	Deputy Court Administrator	2157	1.00	40.00	N	CT9	1
	Judicial Interpreter	2164	1.00	40.00	N	-	1
TOTAL		8.00				7.00	
JURY COMMISSION (2220)	Jury Commission Clerk (Part Time)	2536	0.50	20.00	N	-	1
TOTAL		0.50				1.00	
CIRCUIT CLERK (2310)	Accounting Clerk B	2110	1.00	40.00	N	CT6	1
	Circuit Clerk	0501	1.00	40.00	Y	-	1
	Deputy Clerk	2155	13.00	457.50	N	AS4	13
	Supervisory Deputy Clerk	2185	4.00	142.50	N	AS8	4
TOTAL		19.00				19.00	

DEKALB COUNTY GOVERNMENT

FY 2013 BUDGET

ORGANIZATIONAL TABLE

DEPARTMENT	CLASSIFICATION	CLASS NUMBER	# OF FUNDED POSITIONS	TOTAL WEEKLY HOURS	FLSA EXEMPT	HAY GRADE	INS SLOTS
CORONER (2410)	Chief Deputy Coroner (Part Time)	2521	0.25	10.00	Y	-	0
	Coroner	0521	0.50	20.00	Y	-	1
	Deputy Coroner (Part Time)	2523	0.25	10.00	Y	-	0
	Executive Secretary	2161	0.25	10.00	N	CT9	0
	TOTAL		1.25				1.00
ESDA (2510)	Assistant ESDA Coordinator	2570	0.10	4.00	N	-	0
	ESDA Coordinator	2560	0.50	20.00	Y	-	0
	Executive Secretary	2161	0.75	30.00	N	CT9	1
	TOTAL		1.35				1.00
SHERIFF (2610)	Administrative Secretary	5515	1.00	40.00	N	AC8	1
	Chief Deputy Sheriff	2522	1.00	40.00	Y	SP3	1
	Detective	5130	7.00	280.00	N	FP8	7
	Evidence Control Officer (Part Time)	2524	0.50	20.00	N	AS9	0
	Lieutenant/Patrol	2545	1.00	40.00	Y	SP1	1
	Office Coordinator	2165	1.00	40.00	N	CT9	1
	Patrol	5140	21.00	840.00	N	FP8	21
	Patrol - Home Monitoring	5140	2.00	80.00	N	FP8	2
	Patrol - Kishwaukee College	5140	2.00	80.00	N	FP8	2
	Patrol - Kishwaukee Hospital	5140	1.00	40.00	N	FP8	1
	Secretary B	5583	3.00	120.00	N	AC6	3
	Secretary B	5583	0.50	20.00	N	AC6	3
	Sergeant/Detective	5125	1.00	40.00	N	FP11	1
	Sergeant/Patrol	5135	4.00	160.00	N	FP10	4
	Sgt./Patrol-Kish College	5135	1.00	40.00	N	FP10	1
	Sheriff	0531	1.00	40.00	Y	-	1
TOTAL		48.00				50.00	
SHERIFF - COMMO (2670)	Communications	5110	20.00	800.00	N	FP6	20
	Lieutenant/Commo	2540	1.00	40.00	Y	SP1	1
	Sergeant/Communications	5105	5.00	200.00	N	FP8	5
TOTAL		26.00				26.00	
SHERIFF - CORR (2680)	Corrections	5120	19.00	760.00	N	FP8	19
	Corrections (<30 hrs/week/person)	2160	2.00	80.00	N	AS8	0
	Lieutenant/Corrections	2542	1.00	40.00	Y	SP1	1
	Sergeant/Corrections	5115	5.00	200.00	N	FP10	5
TOTAL		27.00				25.00	
STATE'S ATTORNEY (2710)	Attorney - Level One	2507	5.00	200.00	Y	-	5
	Attorney - Level Two	2508	6.00	240.00	Y	-	6
	Attorney - Level Three	2510	1.00	40.00	Y	-	1
	Executive Assistant	2525	1.00	37.50	Y	LT13	1
	Legal Secretary B	5551	7.00	245.00	N	AC7	7
	State's Attorney	0541	1.00	40.00	Y	-	1
	Victim/Witness Assistant	5589	1.00	35.00	N	AA7	1
	TOTAL		22.00				22.00

DEKALB COUNTY GOVERNMENT

FY 2013 BUDGET

ORGANIZATIONAL TABLE

DEPARTMENT	CLASSIFICATION	CLASS NUMBER	# OF FUNDED POSITIONS	TOTAL WEEKLY HOURS	FLSA EXEMPT	HAY GRADE	INS SLOTS
PUBLIC DEFENDER (2810)	Administrative Secretary	2135	1.00	40.00	N	CT8	1
	Attorney - Level One	2507	5.00	200.00	Y	-	5
	Attorney - Level Two	2508	2.00	80.00	Y	-	2
	Investigator	2534	1.00	40.00	N	-	1
	Public Defender	2511	1.00	40.00	Y	-	1
	Secretary B	2175	1.00	40.00	N	CT6	1
	TOTAL		11.00				11.00
COURT SERVICES (2910)	Administrative Clerk C	4280	1.00	37.50	N	CT6	1
	Comm. Restitution Services Coord.	6710	1.00	37.50	N	TP9	1
	Deputy Director	4110	1.00	37.50	Y	CSA10	1
	Probation Officer - Adult	6720	5.00	187.50	N	TP9	5
	Probation Officer - Adult/Drug Court	6720	1.00	37.50	N	TP9	1
	Probation Officer - Juvenile	6730	4.00	150.00	N	TP9	4
	Probation Officer - Juv/Intensive	6730	2.00	75.00	N	TP9	2
	Secretary A	4270	1.00	37.50	N	CS4	1
	Supervisor - Juvenile	4125	1.00	37.50	Y	CSA9	1
	TOTAL		17.00				17.00
FACILITIES MGMT (4810)	Facilities Manager	1061	1.00	40.00	Y	MA	1
	General Maintenance	5555	1.00	40.00	N	AL9A	1
	General Maintenance (Part Time)	5555	0.47	19.00	N	AL9A	0
	Maintenance II	5556	3.00	120.00	N	AL10B	3
	Maintenance III	5557	1.00	40.00	N	AL10A	1
	Maintenance Supervisor	5560	1.00	40.00	N	AL12	1
	Offset Printer	5574	1.00	40.00	N	AA4	1
	Secretary B	5583	1.00	40.00	N	AC6	1
	TOTAL		9.47				9.00
COMM OUTRCH BLDG (4910)	General Maintenance (Part Time)	5555	0.38	15.00	N	AL9A	0
	TOTAL		0.38				0.00
SUBTOTAL GENERAL FUND EMPLOYEES			238.67				231.00
COURT SECURITY (2650)	Corrections Officer	5120	3.00	120.00	N	FP8	3
	Security Officer (<30 hrs/week/person)	2550	1.00	40.00	N	-	0
	Sergeant/Corrections	5115	1.00	40.00	N	FP10	1
	TOTAL		5.00				4.00
HIGHWAY (3510)	Administrative Clerk C	5511	1.00	40.00	N	AC6	1
	County Engineer	1041	1.00	40.00	Y	M3	1
	Highway Maintainer	5305	9.00	360.00	N	-	9
	Maintenance	5310	1.00	40.00	N	-	1
	Maintenance Foreman	2547	1.00	40.00	Y	AS11	1
	Mechanic	5320	2.00	80.00	N	-	2
	Operations Manager	2530	1.00	40.00	Y	M2	1
	Permit/Inventory Tech III	5575	1.00	40.00	N	AL11	1
	Support Services Manager	2555	1.00	40.00	Y	M2	1
Traffic Control Technician	5330	2.00	80.00	N	-	2	
	TOTAL		20.00				20.00

DEKALB COUNTY GOVERNMENT

FY 2013 BUDGET

ORGANIZATIONAL TABLE

DEPARTMENT	CLASSIFICATION	CLASS NUMBER	# OF FUNDED POSITIONS	TOTAL WEEKLY HOURS	FLSA EXEMPT	HAY GRADE	INS SLOTS	
ENGINEERING (3520)	Engineering Manager	2505	1.00	40.00	Y	M2	1	
	Engineering Technician III	5543	2.00	80.00	N	AL11	2	
	TOTAL		3.00				3.00	
AID TO BRIDGES (3530)	Engineering Technician III	5543	1.00	40.00	N	AL11	1	
	TOTAL		1.00				1.00	
PUBLIC HEALTH (3610)	Accounting Assistant	5603	1.00	37.50	N	-	1	
	Accounting Clerk A	5604	2.00	75.00	N	CT7A	2	
	Administrative Clerk C	5608	2.00	75.00	N	CT6	2	
	Administrator	3501	1.00	37.50	Y	M3	1	
	Animal Control Warden	5612	2.00	75.00	N	LT7A	2	
	Assistant Administrator	3502	1.00	37.50	Y	-	1	
	Case Manager	5620	1.00	37.50	N	-	1	
	Communicable Disease Coord.	3524	1.00	37.50	Y	AS9	1	
	Dir. of Administrative Services	3530	1.00	37.50	Y	-	1	
	Dir. of Environmental Health	3532	1.00	37.50	Y	AS11	1	
	Dir. of Health Education & Emerg. Prep.	3536	1.00	37.50	Y	AS10	1	
	Dir. of Personal Health Services	3540	1.00	37.50	Y	-	1	
	Family Planning Coordinator	3544	1.00	37.50	Y	AS10	1	
	Health Educator	5647	2.00	75.00	N	-	2	
	HIV/STD Clinical Team Leader	3548	1.00	37.50	Y	-	1	
	Licensed Env. Health Practitioner	5660	1.40	52.50	N	-	1	
	LEHP in Training	5688	0.60	22.50	N	-	0	
	Nutritionist	5668	1.00	37.50	N	AS7	1	
	Office Assistant B	5672	1.00	37.50	N	CT4	1	
	Pediatric Services Coordinator	3581	1.00	37.50	Y	-	1	
	Public Health Associate	5682	1.00	37.50	N	-	1	
	Public Health Nurse	5684	7.60	285.00	N	AS9	7	
	Secretary/Case Manager Assistant	5625	1.00	37.50	N	CT6	1	
	Secretary/Clinic Aide	5626	0.60	22.50	N	CT6	0	
	Secretary B	5693	5.40	202.50	N	CT6	5	
	WIC/FCM Program Coordinator	3595	1.00	37.50	Y	-	1	
	WIC/FCM Team Leader	3596	1.00	37.50	Y	-	1	
	TOTAL			41.60				39.00
	SOLID WASTE PROGRAM (3650)	Licensed Env. Health Practitioner	5660	0.60	22.50	N	-	1
		TOTAL		0.60				1.00
MENTAL HEALTH (3710)	Administrative Assistant	3715	1.00	40.00	N	-	1	
	Administrator	3701	1.00	40.00	Y	AS11	1	
	TOTAL		2.00				2.00	

DEKALB COUNTY GOVERNMENT

FY 2013 BUDGET

ORGANIZATIONAL TABLE

DEPARTMENT	CLASSIFICATION	CLASS NUMBER	# OF FUNDED POSITIONS	TOTAL WEEKLY HOURS	FLSA EXEMPT	HAY GRADE	INS SLOTS
COMMUNITY SERVICES (4410)	Case Manager	2152	2.00	75.00	N	CT8	2
	Community Services Director	1021	1.00	40.00	Y	MB	1
	Office Coordinator	2165	1.00	40.00	N	CT9	1
	TOTAL		4.00				4.00
VETERANS' ASSIST (4610)	Driver (Part Time)	4662	1.00	40.00	N	CT5	0
	Executive Secretary	4661	1.00	40.00	N	CT9	1
	Service Officer	4663	3.00	120.00	N	AS9	3
	Superintendent	4601	1.00	40.00	Y	AS11	1
	TOTAL		6.00				5.00
COURT AUTOMATION (5340)	Deputy Clerk	2155	3.00	105.00	N	AS4	3
	Deputy Clerk (<30 hrs/week/person)	2155	1.00	35.00	N	AS4	0
	TOTAL		4.00				3.00
CHILD SUPPORT (5350)	Deputy Clerk	2155	1.00	35.00	N	AS4	1
	TOTAL		1.00				1.00
DOCUMENT STORAGE (5360)	Deputy Clerk (<30 hrs/week/person)	2155	2.00	70.00	N	AS4	0
	TOTAL		2.00				0.00
MICROGRAPHICS (5520)	Office Assistant B	5568	1.00	35.00	N	AC4	1
	Administrative Clerk B	5510	1.00	35.00	N	AC7	1
	TOTAL		2.00				2.00
DRUG COURT (5620)	Drug Court Counselor	2158	1.00	40.00	N	-	1
	Special (Drug) Court Administrator	2553	1.00	40.00	Y	-	1
	TOTAL		2.00				2.00
HISTORY ROOM (6530)	Assistant Historian (Part Time)	2535	0.25	10.00	N	-	0
	Historian (Part Time)	2533	0.25	10.00	N	-	0
	TOTAL		0.50				0.00
SUBTOTAL COUNTY EMPLOYEES EXCLUDING REHAB AND NURSING CENTER			333.37				318.00

DEKALB COUNTY GOVERNMENT

FY 2013 BUDGET

ORGANIZATIONAL TABLE

DEPARTMENT	CLASSIFICATION	CLASS NUMBER	# OF FUNDED POSITIONS	TOTAL WEEKLY HOURS	FLSA EXEMPT	HAY GRADE	INS SLOTS
NURSING-REHAB. (3840)	Director of Rehabilitation	3355	1.00	38.75	Y	-	1
	Restorative Nurse - LPN	3166	1.00	38.75	N	-	1
	Restorative Nurse - RN	3165	1.00	38.75	N	AS9	1
	Restorative Aide	5969	4.00	155.00	N	NS4	4
	TOTAL			7.00			7.00
NURSING-SOCIAL SERVICES (3860)	Director of Social Services	3360	1.00	38.75	Y	AS10	1
	Social Service Assistant	3182	2.00	77.50	N	AS8	2
	Social Srvc/Med Records Tech.	3183	1.00	38.75	N	-	1
	TOTAL			4.00			4.00
NURSING-PATIENT ACTIVITY (3870)	Activity Aide	5910	4.75	184.00	N	NS3	5
	Director of Activities	3330	1.00	38.75	Y	AS8	1
	TOTAL			5.75			6.00
NURSING-DIETARY (3880)	Assistant Director of Dietary Services	3304	1.00	38.75	N	AS8	1
	Cook II	5918	3.50	135.50	N	NL9B	3
	Dietary Aide	5922	18.00	697.50	N	NL3	18
	Director of Dietary Services	3335	1.00	38.75	Y	AS10	1
	Lead Cook	5917	1.00	38.75	N	-	1
	TOTAL			24.50			24.00
NURSING-SPECIAL CARE (3930)	Activity Aide	5910	3.00	116.25	N	NS3	3
	Director of Special Care Unit	3365	1.00	38.75	Y	-	1
	Nurse's Assistant - CNA	5951	15.00	581.25	N	-	15
	Staff Nurse - LPN	5986	2.25	87.25	N	-	2
	Staff Nurse - RN	3187	1.50	58.00	N	-	1
	TOTAL			22.75			22.00
NURSING-NURSING (3950)	Assistant Director of Nursing	3310	1.00	38.75	Y	SP1	1
	Care Plan Coordinator	3114	1.00	38.75	N	AS10	1
	Clinical Support Services Coord.	3121	1.00	38.75	N	-	1
	Director of Nursing	3350	1.00	38.75	Y	SP3	1
	Nurse's Assistant - CNA	5951	53.00	2,053.75	N	-	53
	Administrative Secretary	3150	1.00	38.75	N	-	1
	RN Charge Nurse	3173	3.00	116.25	N	AS10	3
	RN House Supervisor	3174	3.00	116.25	N	AS11	3
	Schedule Coordinator	3175	1.00	38.75	N	-	1
	Staff Nurse - LPN	5986	4.00	155.00	N	-	4
	Staff Nurse - RN	3187	17.00	658.75	N	AS9	17
	Unit Assistant	5994	3.50	135.50	N	-	3
	Unit Clerk	5993	1.00	38.75	N	-	1
	Ward Secretary	5995	2.00	77.50	N	NC6	2
	TOTAL			92.50			92.00

DEKALB COUNTY GOVERNMENT

FY 2013 BUDGET

ORGANIZATIONAL TABLE

DEPARTMENT	CLASSIFICATION	CLASS NUMBER	# OF FUNDED POSITIONS	TOTAL WEEKLY HOURS	FLSA EXEMPT	HAY GRADE	INS SLOTS
NURSING-ENV . SERVICES (3960)	Director of Environmental Services	3315	1.00	38.75	Y	LT8	1
	Housekeeping Aide	5930	9.00	348.75	N	NL3	9
	Laundry Worker I	5935	4.00	155.00	N	NL3	4
	Lead Housekeeper	5919	1.00	38.75	N	-	1
	TOTAL			15.00			15.00
NURSING-MAINT. (3970)	Groundskeeper	3125	0.25	9.50	N	-	0
	Maintenance I	5939	1.00	38.75	N	NL8A	1
	Maintenance Supervisor	5946	1.00	38.75	N	LT12	1
TOTAL			2.25			2.00	
NURSING-ADMIN. (3980)	Accounting Clerk A	3105	1.00	38.75	N	CT7A	1
	Accounting Clerk B	3106	2.00	77.50	N	CT6	2
	Administrator	3301	1.00	40.00	Y	M4	1
	Payroll Clerk	3155	1.00	38.75	N	CT6	1
	Receptionist	5963	2.00	75.00	N	NC4	2
TOTAL			7.00			7.00	
SUBTOTAL REHAB & NURSING CENTER EMPLOYEES			180.75				179.00
GRAND TOTAL COUNTY EMPLOYEES			<u>514.12</u>				<u>497.00</u>
FOREST PRESERVE (4210)	Park Manager	7106	1.00	40.00	N	-	1
	Park Manager (Part Time)	7105	0.75	30.00	N	LT8C	1
	Park Manager (<30 hrs/week/person)	7105	0.75	30.00	N	LT8C	0
	Maintenance (<30 hrs/week/person)	7110	0.85	34.00	N	-	0
	Maintenance Supervisor	7115	1.00	40.00	N	LT12A	1
	Natural Resource Manager (Part Time)	7130	0.65	26.00	N	-	0
	Superintendent	7101	1.00	40.00	Y	M1	1
TOTAL FOREST PRESERVE EMPLOYEES			<u>6.00</u>			<u>4.00</u>	

DEKALB COUNTY GOVERNMENT

FY 2013 BUDGET

ORGANIZATIONAL TABLE

<u>DEPARTMENT</u>	<u>CLASSIFICATION</u>	<u>CLASS NUMBER</u>	<u># OF FUNDED POSITIONS</u>	<u>TOTAL WEEKLY HOURS</u>	<u>FLSA EXEMPT</u>	<u>HAY GRADE</u>	<u>INS SLOTS</u>
BOARDS & COMMISSIONS							
Board of Review		0301	3.00	-		-	
Board of Review Alternate		0303	3.00	-		-	
County Board Chairperson		0101	1.00	-		-	
County Board Vice-Chairperson		0102	1.00	-		-	
County Board Standing Committee Chairperson		0103	8.00	-		-	
County Board Member (including above chairperson positions)		0105	24.00	-		-	
Farmland Assessment Review Committee		0302	4.00	-		-	
Jury Commission		0304	3.00	-		-	
Merit Commission		0305	3.00	-		-	

DEKALB COUNTY GOVERNMENT

FY 2013 BUDGET

ORGANIZATIONAL TABLE

<u>DEPARTMENT</u>	<u>CLASSIFICATION</u>	<u>CLASS NUMBER</u>	<u># OF FUNDED POSITIONS</u>	<u>TOTAL WEEKLY HOURS</u>	<u>FLSA EXEMPT</u>	<u>HAY GRADE</u>	<u>INS SLOTS</u>
UNFUNDED POSITIONS							
INFORMATION MANAGEMENT OFFICE (1310)	Cartographer	5520	1.00	40.00	N	AA8	
	GIS Technician	5553	1.00	40.00	N	AA8	
	TOTAL		2.00				
SHERIFF (2610)	Patrol	5140	2.00	80.00	N	FP8	
	TOTAL		2.00				
COUNTY CLERK & RECORDER (1510)	Administrative Clerk C	5511	1.00	37.50	N	AC6	
	TOTAL		1.00				
SHERIFF - CORR (2680)	Corrections	5120	1.00	40.00	N	FP8	
	TOTAL		1.00				
PUBLIC DEFENDER (2810)	Law Clerk (Part Time)	2159	0.25	10.00	N	-	
	TOTAL		0.25				
HIGHWAY (3510)	Engineering Technician II	5542	1.00	40.00	N	AL10B	
	TOTAL		1.00				
PUBLIC HEALTH (3610)	Case Manager	5620	1.00	37.50	N	-	
	Health Educator	5647	0.50	18.75	N	-	
	Licensed Env. Health Practitioner	5660	0.60	22.50	N	-	
	LEHP in Training	5688	0.40	15.00	N	-	
	Nutritionist	5668	0.50	18.75	N	AS7	
	Office Assistant B	5672	0.50	18.75	N	CT4	
	Public Health Nurse	5684	2.40	90.00	N	AS9	
	Secretary/Clinic Aide	5626	0.40	15.00	N	CT6	
	Secretary B	5693	4.60	172.50	N	CT6	
TOTAL			10.90				
FACILITIES MGMT (4810)	General Maintenance (Part Time)	5555	0.50	20.00	N	AL9A	
	TOTAL		22.30				
NURSING-ADMIN. (3980)	Business Manager	3325	1.00	38.75	Y	AS11	
	TOTAL		1.00				
TOTAL UNFUNDED POSITIONS			41.45				