

# DEKALB COUNTY

## DEKALB COUNTY JAIL EXPANSION

### SOUTHEAST PARKING LOT

### SECTION NO: 15-00253-00-PK



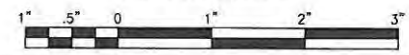
SHEET INDEX	
TITLE	SHEET NO.
COVER SHEET	1
GENERAL NOTES, HIGHWAY STANDARDS AND BENCHMARKS	2
SUMMARY OF QUANTITIES	3
PARKING LOT PLAN	4
DRAINAGE AND GRADING	5
EROSION AND SEDIMENT CONTROL	6
LIGHTING PLAN	7
LIGHTING DETAILS	8 - 9
MISCELLANEOUS DETAILS	10

*James F. McNally*  
10/1/15



PROJECT MANAGER  
\*LICENSE EXPIRES 11-30-2015\*

BAXTER & WOODMAN, INC.  
STATE OF ILLINOIS - PROFESSIONAL DESIGN FIRM  
LICENSE NO. - 184-001121 - EXPIRES 4/30/2017



I:\DEKALB\PROJECTS\110522 DEKALB JAIL EXPANSION\CADD\DRAWINGS\110522-CC\ERSHT-C3D14.DWG C:\1  
 Plotted: 10/1/2015 9:29 AM By: 607JES

COPYRIGHT 2015 BY BAXTER & WOODMAN, INC.  
ALL RIGHTS RESERVED. NO PART OF THESE DRAWINGS  
MAY BE REPRODUCED OR OTHERWISE REVISED WITHOUT  
WRITTEN PERMISSION OF BAXTER & WOODMAN, INC.

**GENERAL NOTES**

**SPECIFICATIONS, STANDARDS AND SPECIAL PROVISIONS**

1. ALL REFERENCES TO STANDARD SPECIFICATIONS IN THESE GENERAL NOTES SHALL BE INTERPRETED TO MEAN THE "STANDARD SPECIFICATIONS FOR ROAD AND BRIDGE CONSTRUCTION" ADOPTED BY THE ILLINOIS DEPARTMENT OF TRANSPORTATION, JANUARY 1, 2012 AND THE "SUPPLEMENTAL SPECIFICATIONS AND RECURRING SPECIAL PROVISIONS", ADOPTED JANUARY 1, 2015.
2. ALL CONSTRUCTION SHALL BE IN ACCORDANCE WITH THE STANDARD SPECIFICATIONS; THE LATEST EDITION OF THE "ILLINOIS MANUAL ON UNIFORM TRAFFIC CONTROL DEVICES FOR STREETS AND HIGHWAYS", (IMUTCD; THE "STANDARD SPECIFICATIONS FOR TRAFFIC CONTROL ITEMS", (SSTCI), "THE STANDARD SPECIFICATIONS FOR WATER AND SEWER MAIN CONSTRUCTION IN ILLINOIS" MAY 2009 SIXTH EDITION, THE "DETAILS" IN THE PLANS, THE "SPECIAL PROVISIONS AND IDOT STANDARD DRAWINGS.
3. IN THE GENERAL NOTES, ALL REFERENCES TO ENGINEER SHALL BE INTERPRETED AS THE RESIDENT ENGINEER. ALL REFERENCES TO THE COUNTY SHALL BE INTERPRETED AS DEKALB COUNTY.

**STAKING**

1. PAVEMENT GRADES: THE ELEVATIONS INDICATED ON THE PLANS ARE FINISHED GRADES OF PROPOSED SURFACE COURSE NOT INCLUDED AS PART OF THIS CONTRACT. CONTRACTOR SHALL MAKE APPROPRIATE ADJUSTMENTS FOR PLACEMENT OF BINDER COURSE.

**TREE REMOVAL, CLEARING AND HEDGE REMOVAL**

1. ALL TREES ARE DESIGNATED TO BE SAVED UNLESS OTHERWISE NOTED ON THE PLANS, AND SHALL BE PROTECTED IN ACCORDANCE WITH THE PROVISIONS OF ARTICLE 201.05 OF THE STANDARD SPECIFICATIONS.
2. ALL CLEARING AND REMOVAL OF BUSHES, HEDGES AND TREES UNDER 6" IN DIAMETER SHALL BE INCLUDED IN THE COST OF SITE GRADING.

**UTILITIES**

1. THE CONTRACTOR SHALL NOTIFY THE COUNTY AND THE CITY OF SYCAMORE PUBLIC WORKS DEPARTMENT, (815) 845-3545 AT LEAST 48 HOURS IN ADVANCE OF BEGINNING WORK AND ALSO PRIOR TO ANY TEMPORARY STOP OR RESUMPTION OF OPERATIONS.
2. PRIOR TO THE START OF THE CONSTRUCTION OPERATIONS, THE CONTRACTOR SHALL COORDINATE CONSTRUCTION ACTIVITIES WITH UTILITY COMPANIES. THE LOCATION OF PUBLIC OR PRIVATE UTILITIES SHOWN ON THE PLANS ARE APPROXIMATE AND THE COUNTY DOES NOT GUARANTEE THEIR ACCURACY. THE CONTRACTOR WILL BE REQUIRED TO ASCERTAIN THE EXACT LOCATION OF SUCH UTILITIES AND EXERCISE CARE DURING CONSTRUCTION OPERATIONS SO AS NOT TO DAMAGE THEM IN ACCORDANCE WITH THE SPECIAL PROVISIONS AND ARTICLE 107.31 OF THE STANDARD SPECIFICATIONS. THE CONTRACTOR SHALL BE RESPONSIBLE FOR CONTACTING THE OWNERS OF ALL EXISTING UTILITIES SO THAT THEIR FACILITIES MAY BE LOCATED AND ADJUSTED OR MOVED.
3. BEFORE STARTING ANY EXCAVATION, THE CONTRACTOR SHALL CALL "JULIE" AT 1-800-892-0123 FOR FIELD LOCATIONS OF BURIED ELECTRIC, TELEPHONE, GAS, WATER, SEWER, AND CABLE TELEVISION FACILITIES. (48 HOURS NOTIFICATION IS REQUIRED.)
4. THE CONTRACTOR SHALL BE RESPONSIBLE FOR THE PROTECTION OF ALL ABOVE AND BELOW GROUND UTILITIES EVEN THOUGH THEY MAY NOT BE SHOWN ON THE PLANS. ANY UTILITY THAT IS DAMAGED DURING CONSTRUCTION SHALL BE REPAIRED OR REPLACED TO THE SATISFACTION OF THE ENGINEER, THE COUNTY OR THE CITY OF SYCAMORE. THIS WORK SHALL BE AT THE CONTRACTOR'S EXPENSE.
5. THE CONTRACTOR SHALL COOPERATE WITH THE COUNTY IN ANY UNDERGROUND UTILITY CONSTRUCTION WHICH THE COUNTY MAY WANT TO PLACE DURING THE CONTRACTOR'S OPERATIONS.
6. ALL MANHOLES, CATCH BASINS, AND INLETS SHALL BE MORTARED WITH HYDRAULIC CEMENT AS SHOWN ON THE DETAILS ON THE INSIDE AND OUTSIDE AT ALL STRUCTURE JOINTS BETWEEN BARREL, CONE, AND FLAT TOP SECTIONS. ADJUSTING RINGS SHALL BE MORTARED ON THE OUTSIDE AROUND JOINTS TO PREVENT INFILTRATION PROVIDING THEY ARE OUTSIDE OF PAVED AREAS. ONLY NON-PREFORMED MASTIC SHALL BE USED BETWEEN THE FRAME, RINGS, AND TOP OF CONE OR FLAT TOP. (PREFORMED MASTIC -- EZ STICK, RUB-R-NECK, ETC IS NOT ALLOWED ABOVE THE CONE OR FLAT TOP)
7. GRADATION OF TRENCH BACKFILL MATERIAL SHALL BE CA-6, AND SHALL BE PLACED IN UNIFORM LAYERS NOT EXCEEDING 6 INCHES (LOOSE MEASURE) AND COMPACTED WITH MECHANICAL EQUIPMENT TO 95% OF STANDARD PROCTOR DENSITY. PIPE BEDDING SHALL BE A MINIMUM OF 2 INCHES THICK.
8. ALL FRAMES WITH SELF SEALING CLOSED LIDS TO BE FURNISHED AS PART OF THIS CONTRACT FOR CONSTRUCTION, ADJUSTMENT OR RECONSTRUCTION OF ANY MANHOLES, CATCH BASIN, INLET, VALVE VAULT, OR METER VAULT SHALL HAVE CAST INTO THE LID ONE OF THE FOLLOWING WORDS: ALL LIDS TO BE USED ON STORM SEWER STRUCTURES SHALL BEAR THE WORD "STORM". ALL CURB BOXES SHALL SAY "DUMP NO WASTE" OR "DRAINS TO RIVERS" OR SIMILAR. THIS WORK SHALL BE CONSIDERED INCLUDED IN THE COST OF THE FRAME AND GRATE OR FRAME AND CLOSED LID PROVIDED.
9. WHENEVER DURING CONSTRUCTION OPERATIONS ANY LOOSE MATERIAL IS DEPOSITED IN THE FLOW LINE OF DRAINAGE STRUCTURES SUCH THAT THE NATURAL FLOW OF WATER IS OBSTRUCTED, IT SHALL BE REMOVED AT THE CLOSE OF EACH WORKING DAY. AT THE CONCLUSION OF CONSTRUCTION OPERATIONS, ALL UTILITY STRUCTURES SHALL BE FREE FROM DIRT AND DEBRIS. THE WORK SPECIFIED ABOVE WILL NOT BE PAID FOR SEPARATELY BUT SHALL BE INCLUDED IN THE CONTRACT.
10. ANY EXISTING OR PROPOSED SEWER DAMAGED BY THE CONSTRUCTOR DURING CONSTRUCTION SHALL BE REPLACED BY THE CONTRACTOR TO THE SATISFACTION OF THE ENGINEER AT NO COST TO THE COUNTY.
11. THE CONTRACTOR SHALL RECEIVE NO ADDITIONAL COMPENSATION FOR CONSTRUCTION STAGING NECESSARY TO ACCOMMODATE UTILITY RELOCATION OR ADJUSTMENT AND/OR FOR DELAYS CAUSED BY UTILITY RELOCATION OR ADJUSTMENT.
12. THE CONTRACTOR SHALL FURNISH ALL LABOR, EQUIPMENT AND MATERIAL NECESSARY FOR DEWATERING TRENCH EXCAVATIONS AS WELL AS SHORING TRENCH WALLS DURING UTILITY OPERATIONS. COMPLIANCE WITH THE ABOVE SHALL BE INCLUDED IN THE COST OF THE UTILITY INSTALLATIONS.

**PAVING AND CURB & GUTTER**

1. THE CONTRACTOR SHALL SAW CUT PAVEMENT, CURB & GUTTER, AND SIDEWALK AS INDICATED ON THE PLANS TO SEPARATE THE EXISTING MATERIAL TO BE REMOVED BY MEANS OF AN APPROVED CONCRETE SAW TO A DEPTH AS SHOWN ON THE PLANS OR AS DIRECTED BY THE ENGINEER. THIS WORK SHALL BE CONSIDERED INCLUDED IN THE ITEM BEING REMOVED.
2. THE LIMITS OF UNDERCUT WILL BE DETERMINED DURING CONSTRUCTION BY THE ENGINEER BASED ON ACTUAL CONDITIONS. THE PLAN QUANTITIES ARE ESTIMATED AND ANY ADDITIONS OR SUBTRACTIONS RESULTING FROM THE CHANGE IN LIMITS OF UNDERCUTTING SHALL BE MADE BY THE ENGINEER. THE CONTRACTOR WILL BE PAID FOR THE ACTUAL QUANTITY OF WORK PERFORMED.
3. BASE COURSE SHALL NOT BE PLACED ADJACENT TO CURB AND GUTTER UNTIL THE CURB AND GUTTER HAS BEEN PROPERLY CURED AND BACKFILLED TO THE SATISFACTION OF THE ENGINEER.

**STORM SEWER**

1. THE COST OF MAKING SEWER CONNECTIONS TO EXISTING OR PROPOSED SEWER OR DRAINAGE STRUCTURES SHALL BE INCLUDED IN THE COST OF THE SEWER OR STRUCTURE BEING CONSTRUCTED. THE COST TO ABANDON AND PLUG STORM SEWER IS INCLUDED IN THE COST OF STORM STRUCTURE REMOVAL.

**SIGNING, STRIPING & LANDSCAPING**

1. THOSE SIGNS WHICH ARE SO DESIGNATED BY THE ENGINEER SHALL BE REMOVED, STORED AND SUBSEQUENTLY RELOCATED BY THE CONTRACTOR AT NO ADDITIONAL COST TO THE CONTRACT. IN ADDITION, ANY SIGNS WHICH ARE DAMAGED DURING CONSTRUCTION OPERATIONS BEYOND REPAIR SHALL BE REPLACED IN KIND BY THE CONTRACTOR TO THE SATISFACTION OF THE ENGINEER AT NO ADDITIONAL COST TO THE CONTRACT.
2. WHEN DIRECTED BY THE ENGINEER, SUPPLEMENTAL WATERING SHALL BE APPLIED TO ALL SEEDED AREAS PRIOR TO FINAL ACCEPTANCE AT A RATE SPECIFIED BY THE ENGINEER AND IN ACCORDANCE WITH THE STANDARD SPECIFICATIONS AND SPECIAL PROVISIONS.
3. THE CONTRACTOR SHALL ADHERE TO LIMITS OF RESTORATION SHOWN, AREAS OUTSIDE THESE LIMITS THAT ARE DAMAGED OR DISTURBED BY THE CONTRACTOR, SHALL BE RESTORED BY THE CONTRACTOR AT HIS EXPENSE, AND NO ADDITIONAL COMPENSATION WILL BE ALLOWED.

**MISCELLANEOUS**

1. DIMENSIONS: IT SHALL BE THE CONTRACTOR'S RESPONSIBILITY TO VERIFY ALL DIMENSIONS AND CONDITIONS EXISTING IN THE FIELD PRIOR TO ORDERING MATERIALS AND BEGINNING CONSTRUCTION.
2. THE CONTRACTOR SHALL ADHERE TO IDOT STANDARD DRAWING NO. 701801 WHEN CLOSING ANY SIDEWALK.
3. PAY ITEMS IN THE SUMMARY OF QUANTITIES HAVE BEEN ESTIMATED. IF, IN THE ENGINEER'S OPINION, THE WORK IS NOT REQUIRED, THE ITEM WILL BE DEDUCTED FROM THE CONTRACT AND NO ADDITIONAL COMPENSATION WILL BE ALLOWED.
4. BARRICADES: THE CONTRACTOR SHALL PROVIDE AND INSTALL TWO (2) WEIGHTED SAND BAGS ON EACH TYPE I OR II BARRICADE USED. (ONE (1) WEIGHTED BAG ACROSS EACH BOTTOM RAIL.)
5. A COPY OF THE CITY OF SYCAMORE APPROVED STAMPED PLANS AND SPECIFICATIONS AND OTHER AGENCIES' PERMITS MUST BE KEPT ON THE JOB SITE DURING CONSTRUCTION OF THE PROJECT WORK.
6. CHANGES IN THE ENGINEERING PLANS MUST BE APPROVED BY THE RESIDENT ENGINEER. A WRITTEN REQUEST, ACCOMPANIED BY REVISED ENGINEERING PLANS, IS TO BE SUBMITTED AND APPROVED BEFORE CHANGES ARE STARTED.
7. THE CONTRACTOR SHALL CONTACT THE DESIGNATED MATERIAL INSPECTOR AT LEAST 48 HOURS PRIOR TO ANY CONCRETE OR HOT-MIX ASPHALT MATERIAL DELIVERIES.
8. FURNISHED EXCAVATION FROM AN OFF-SITE LOCATION, IF NECESSARY, SHALL BE INCLUDED IN THE ITEM EARTH EXCAVATION.
9. IN ALL TRENCHES CROSSING DRIVEWAYS, SIDEWALKS, AND ALL PROPOSED AND EXISTING ROADWAYS, THE MATERIAL FOR THE TOP 12 INCHES SHALL BE CA-6 CRUSHED GRAVEL OR CRUSHED STONE AND BE INCLUDED IN THE PAY ITEM FOR TRENCH BACKFILL OR CONTROLLED LOW STRENGTH MATERIAL.
10. IF NEEDED, SIDE CURBS AS SHOWN ON HIGHWAY STANDARD 424026-01 OR AS SHOWN ON THE PLANS SHALL BE MEASURED HORIZONTALLY AND SHALL BE PAID FOR AS PORTLAND CEMENT CONCRETE SIDEWALK, 5 INCH.
11. A PORTABLE BATHROOM(S) SHALL BE PLACED ON THE JOB SITE(S) AND RELOCATED WHEN NECESSARY SO IT IS ACCESSIBLE TO WORKERS. IF WORK IS OCCURRING AT SEVERAL LOCATIONS, ONE PORTABLE BATHROOM SHALL BE PLACED AT EACH LOCATION WITHIN A REASONABLE DISTANCE FROM THE WORK AS DETERMINED BY THE ENGINEER. THIS SHALL BE INCLUDED IN THE PAY ITEM FOR MOBILIZATION.
12. FOR PATCHES ON STREETS UNDER THIS CONTRACT, THE TOP 1 1/2" OF MIX SHALL BE HOT-MIX ASPHALT SURFACE COURSE. EXISTING PAVEMENT SHALL BE SAW CUT FULL DEPTH PRIOR TO REMOVAL. THIS WORK WILL NOT BE PAID FOR SEPARATELY, BUT SHALL BE INCLUDED IN THE COST OF CLASS D PATCHES.
13. ALL FRAME AND LID CASTINGS LOCATED WITHIN THE PAVEMENT WHICH REQUIRE RESETTING TO FINISH GRADE SHALL BE BACKFILLED WITH CLASS SI CONCRETE AND ALLOWED TO CURE FOR 72 HOURS PRIOR TO PLACEMENT OF SURFACE COURSE. CLASS PP CONCRETE SHALL BE USED IF PLACEMENT OF SURFACE COURSE IS PLANNED IN LESS THAN 72 HOURS. HMA MATERIALS WILL NOT BE ALLOWED AS BACKFILL AROUND AN ADJUSTED CASTING. THIS WORK SHALL APPLY TO ALL CASTINGS ADJUSTED OR RECONSTRUCTED AS PART OF THIS CONTRACT, WHETHER PAID FOR SEPARATELY OR INCLUDED IN OTHER CONTRACT WORK.
14. THE CONTRACTOR WILL BE REQUIRED TO USE A STEEL PLATE OR PLATES TO CLOSE ANY GAPS OCCURRING WHEN A FRAME IS OFFSET FROM THE STRUCTURE. THE STEEL PLATE SHALL BE 1/2-INCH THICK AND APPROXIMATELY 6-INCH WIDE BY 24-INCH LONG. SOME ADJUSTMENT IN SIZE MAY BE NECESSARY TO PREVENT THE STEEL PLATE FROM OVERHANGING THE OUTSIDE OF THE STRUCTURE WALL. THE STEEL PLATE SHALL BE BEDDED IN AND COVERED WITH MORTAR. THIS WORK SHALL BE INCLUDED IN THE COST OF STRUCTURE ADJUSTMENTS OR STRUCTURE RECONSTRUCTIONS.

**EROSION CONTROL NOTES**

1. THE CONTRACTOR SHALL INSPECT ALL EROSION CONTROL MEASURES AT LEAST WEEKLY AND AFTER EACH SOIL RUNOFF PRODUCING RAINFALL EVENT. ANY NECESSARY REPAIRS OR CLEAN UP TO MAINTAIN THE EFFECTIVEMENTS OR SAID MEASURES SHALL BE MADE IMMEDIATELY (THE SAME DAY).
2. ALL SLOPES SHALL BE COVERED WITH SEED AND BLANKET AS SOON AS GRADING AND PLACEMENT OF TOPSOIL HAS BEEN COMPLETED. THE LIMITS OF SEEDING SHALL BE THE LIMITS OF GRADING AND/OR AS DETERMINED BY THE ENGINEER.
3. THE EROSION CONTROL MEASURES INDICATED ON THE PLANS ARE THE MINIMUM REQUIREMENTS. ADDITIONAL MEASURES MAY BE REQUIRED.
4. SOIL DISTURBANCE SHALL BE CONDUCTED IN SUCH A MANNER AS TO MINIMIZE EROSION. SOIL STABILIZATION MEASURES SHALL CONSIDER THE TIME OF YEAR, SITE CONDITIONS AND THE USE OF TEMPORARY OR PERMANENT MEASURES.
5. ALL STORM SEWERS THAT ARE OR WILL BE FUNCTIONING DURING CONSTRUCTION SHALL BE PROTECTED, BY AN APPROPRIATE SEDIMENT CONTROL MEASURE.
6. ALL TEMPORARY EROSION AND SEDIMENT CONTROL MEASURES SHALL BE REMOVED WITHIN 30 DAYS AFTER FINAL SITE STABILIZATION IS ACHIEVED OR AFTER THE TEMPORARY MEASURES ARE NO LONGER NEEDED.
7. A STABILIZED CONSTRUCTION ENTRANCE OF AGGREGATE UNDERLAIN WITH FILTER CLOTH (OR OTHER APPROPRIATE MEASURE) SHALL BE LOCATED AT ANY POINT WHERE TRAFFIC WILL BE ENTERING OR LEAVING A CONSTRUCTION SITE TO OR FROM A PUBLIC RIGHT-OF-WAY, STREET, ALLEY OR PARKING AREA. ANY SEDIMENT OR SOIL REACHING AN IMPROVED PUBLIC RIGHT-OF-WAY, STREET, ALLEY OR PARKING AREA SHALL BE REMOVED BY SCRAPING OR STREET CLEANING AS ACCUMULATIONS WARRANT AND TRANSPORTED TO A CONTROLLED SEDIMENT DISPOSAL AREA.

8. STABILIZED CONSTRUCTION ENTRANCE SHALL BE MAINTAINED THROUGHOUT DURATION OF CONSTRUCTION TO THE MAXIMUM EXTENT PRACTICABLE, BUT SHALL BE REMOVED NO SOONER THAN COMPLETION OF AGGREGATE SUB-BASE COURSE AND CURB AND GUTTER CONSTRUCTION.

**BENCHMARKS**

- FIRE HYDRANT SOUTHWEST FLANGE BOLT AT THE NORTHWEST CORNER OF MAIN STREET AND EXCHANGE STREET  
EL = 872.61
- FIRE HYDRANT NORTH BONNET BOLT AT THE NORTHWEST CORNER OF LOCUST STREET AND EXCHANGE STREET.  
EL = 870.23
- FIRE HYDRANT NORTHWEST FLANGE BOLT AT THE NORTHWEST CORNER OF LOCUST STREET AND SYCAMORE STREET.  
EL = 858.08
- FIRE HYDRANT AT THE NORTHWEST FLANGE BOLT AT THE NORTHWEST CORNER OF LOCUST STREET AND STATE STREET.  
EL = 870.07
- RAILROAD SPIKE IN POWER POLE WITH LIGHT AT SOUTHWEST CORNER OF WALNUT STREET AND EXCHANGE STREET.  
EL = 855.62

**HIGHWAY STANDARDS**

000001-06	STANDARD SYMBOLS, ABBREVIATIONS AND PATTERNS
280001-07	TEMPORARY EROSION CONTROL SYSTEMS
424026-01	ENTRANCE/ALLEY PEDESTRIAN CROSSINGS
442201-03	CLASS C AND D PATCHES
602001-02	CATCH BASIN TYPE A
602301-04	INLET - TYPE A
602401-03	MANHOLE TYPE A
604001-04	FRAME AND LIDS TYPE 1
604051-03	FRAME AND GRATE TYPE 11
606001-06	CONCRETE CURB TYPE B AND COMBINATION CONCRETE CURB AND GUTTER
606301-04	PC CONCRETE ISLANDS AND MEDIANS
701006-05	OFF-RD OPERATIONS, 2L, 2W, 15' TO 24' FROM PAVEMENT EDGE
701011-04	OFF-RD MOVING OPERATIONS, 2L, 2W, DAY ONLY
701301-04	LANE CLOSURE, 2L, 2W, SHORT TIME OPERATIONS
701501-06	URBAN LANE CLOSURE, 2L, 2W, UNDIVIDED
701801-05	SIDEWALK, CORNER OR CROSSWALK CLOSURE
701901-04	TRAFFIC CONTROL DEVICES
728001-01	TELESCOPING STEEL SIGN SUPPORT
780001-05	TYPICAL PAVEMENT MARKINGS

I:\DEKALB\PS\SIDE\110522 DEKALB JAIL EXPANSION\CA\DD\DRAWINGS\110522-GENITES.DWG GenNotes-2  
 Plotted: 9/28/2015 2:22 PM By: 607JES  
 Copyright © 2015, By: Baxter & Woodman, Inc.  
 State of Illinois - Professional Design Firm  
 License No. - 164-001121 - Expires 4-30-13



DESIGNED -- JFM	REVISED --
DRAWN -- UKB	REVISED --
CHECKED -- JES	REVISED --
DATE -- 9--24--15	REVISED --

**DEKALB COUNTY  
DEKALB COUNTY JAIL EXPANSION  
SOUTHEAST PARKING LOT**

**GENERAL NOTES, EROSION CONTROL NOTES, HIGHWAY STANDARDS  
AND BENCHMARKS**

SCALE: PROJECT NO: 110552.43 STA. TO STA.

F.A. RTE.	SECTION	COUNTY	TOTAL SHEETS	SHEET NO.
		DEKALB	10	2
FED. ROAD DIST. NO.		ILLINOIS FED. AID PROJECT		

**SUMMARY OF QUANTITIES**

NO.	ITEM	UNIT	TOTAL QUANTITY	UNIT PRICE	TOTAL PRICE
20101100	TREE TRUNK PROTECTION	EACH	2		
20800150	TRENCH BACKFILL	CU YD	159		
21001000	GEOTECHNICAL FABRIC FOR GROUND STABILIZATION	SQ YD	799		
21301072	EXPLORATION TRENCH 72" DEPTH	FOOT	18		
25000110	SEEDING, CLASS 1A	ACRE	1		
25000400	NITROGEN FERTILIZER NUTRIENT	POUND	90		
25000500	PHOSPHORUS FERTILIZER NUTRIENT	POUND	90		
25000600	POTASSIUM FERTILIZER NUTRIENT	POUND	90		
25100630	EROSION CONTROL BLANKET	SQ YD	2,650		
25100900	TURF REINFORCEMENT MAT	SQ YD	135		
28000250	TEMPORARY EROSION CONTROL SEEDING	POUND	49		
28000400	PERIMETER EROSION BARRIER	FOOT	637		
28000510	INLET FILTERS	EACH	4		
* 30300001	AGGREGATE SUBGRADE IMPROVEMENT	CU YD	242		
35101600	AGGREGATE BASE COURSE, TYPE B 4"	SQ YD	1,315		
35102400	AGGREGATE BASE COURSE, TYPE B 12"	SQ YD	2,895		
40600275	BITUMINOUS MATERIALS (PRIME COAT)	POUND	6,950		
40603080	HOT-MIX ASPHALT BINDER COURSE, IL-19.0, N50	TON	375		
40603310	HOT-MIX ASPHALT SURFACE COURSE, MIX "C", N50	TON	N/A	N/A	N/A
42001300	PROTECTIVE COAT	SQ YD	1,300		
42400200	PORTLAND CEMENT CONCRETE SIDEWALK 5 INCH	SQ FT	1,670		
42400410	PORTLAND CEMENT CONCRETE SIDEWALK 8 INCH	SQ FT	200		
42400800	DETECTABLE WARNINGS	SQ FT	60		
44000100	PAVEMENT REMOVAL	SQ YD	754		
44000500	COMBINATION CURB AND GUTTER REMOVAL	FOOT	360		
44000600	SIDEWALK REMOVAL	SQ FT	1,261		
44201771	CLASS D PATCHES, TYPE IV, 10 INCH	SQ YD	30		
54213657	PRECAST REINFORCED CONCRETE FLARED END SECTIONS 12"	EACH	2		
54213660	PRECAST REINFORCED CONCRETE FLARED END SECTIONS 15"	EACH	2		
542A1060	PIPE CULVERTS, CLASS A, TYPE 2 15"	FOOT	65		

\* INDICATES SPECIAL PROVISION

**SUMMARY OF QUANTITIES**

NO.	ITEM	UNIT	TOTAL QUANTITY	UNIT PRICE	TOTAL PRICE
550A0050	STORM SEWERS, CLASS A, TYPE 1 12"	FOOT	347		
550A0340	STORM SEWERS, CLASS A, TYPE 2 12"	FOOT	25		
55100300	STORM SEWER REMOVAL 8"	FOOT	125		
* 56106600	ADJUSTING WATER MAIN 12"	FOOT	10		
59300100	CONTROLLED LOW-STRENGTH MATERIAL	CU YD	22		
60201105	CATCH BASINS, TYPE A, 4'-DIAMETER, TYPE 11 FRAME AND GRATE	EACH	1		
60218400	MANHOLES, TYPE A, 4'-DIAMETER, TYPE 1 FRAME, CLOSED LID	EACH	2		
60221100	MANHOLES, TYPE A, 5'-DIAMETER, TYPE 1 FRAME, CLOSED LID	EACH	1		
60236800	INLETS, TYPE A, TYPE 11 FRAME AND GRATE	EACH	3		
60500050	REMOVING CATCH BASINS	EACH	1		
60500060	REMOVING INLETS	EACH	1		
60603800	COMBINATION CONCRETE CURB AND GUTTER, TYPE B-6.12	FOOT	950		
60608300	COMBINATION CONCRETE CURB AND GUTTER, TYPE M-2.12	FOOT	103		
60608562	COMBINATION CONCRETE CURB AND GUTTER, TYPE M-4.12	FOOT	20		
67100100	MOBILIZATION	L SUM	1		
78001100	PAINT PAVEMENT MARKING - LETTERS AND SYMBOLS	SQ FT	24		
78001110	PAINT PAVEMENT MARKING - LINE 4"	FOOT	2,410		
* 80400100	ELECTRIC SERVICE INSTALLATION	EACH	1		
* 80400200	ELECTRIC UTILITY SERVICE CONNECTION	L SUM	1		
* 81028220	UNDERGROUND CONDUIT, GALVANIZED STEEL, 3" DIA.	FOOT	122		
* 81400730	HANDHOLE, COMPOSITE CONCRETE	EACH	1		
* 81603105	UNIT DUCT, 600V, 2-1C NO.8, 1/C NO.8 GROUND, (XLP-TYPE USE), 1" DIA. POLYETHYLENE	FOOT	400		
* 82500330	LIGHTING CONTROLLER, PEDESTAL MOUNTED, 240 VOLT, 60 AMP	EACH	1		
* 83600200	LIGHT POLE FOUNDATION, 24" DIAMETER	FOOT	36		
* Z0013798	CONSTRUCTION LAYOUT	L SUM	1		
* Z0056668	STORM SEWERS, TYPE 2, WATER MAIN QUALITY PIPE, 12"	FOOT	58		
* Z0013797	STABILIZED CONSTRUCTION ENTRANCE	SQ YD	60		
* X0326806	WASHOUT BASIN	L SUM	1		
* X6020084	MANHOLES, WITH RESTRICTOR PLATE	EACH	1		
* X7010216	TRAFFIC CONTROL AND PROTECTION, SPECIAL	L SUM	1		
*	SITE GRADING	L SUM	1		
*	LIGHTING ASSEMBLY, COMPLETE, LED, 25' M.H.	EACH	4		

\* INDICATES SPECIAL PROVISION

I:\DEKALB\PSIDE\110522 DEKALB JAIL EXPANSION\CADD\DRAWINGS\110522-SOQ.DWG SOQ-3  
 Plotted: 9/29/2015 3:13 PM By: 231UKB  
 Copyright © 2015, By: Baxter & Woodman, Inc.  
 State of Illinois - Professional Design Firm  
 License No. - 184-001121 - Expires 4-30-13



DESIGNED - JFM	REVISED -
DRAWN - UKB	REVISED -
CHECKED - JES	REVISED -
DATE - 9-24-15	REVISED -

**DEKALB COUNTY  
DEKALB COUNTY JAIL EXPANSION**

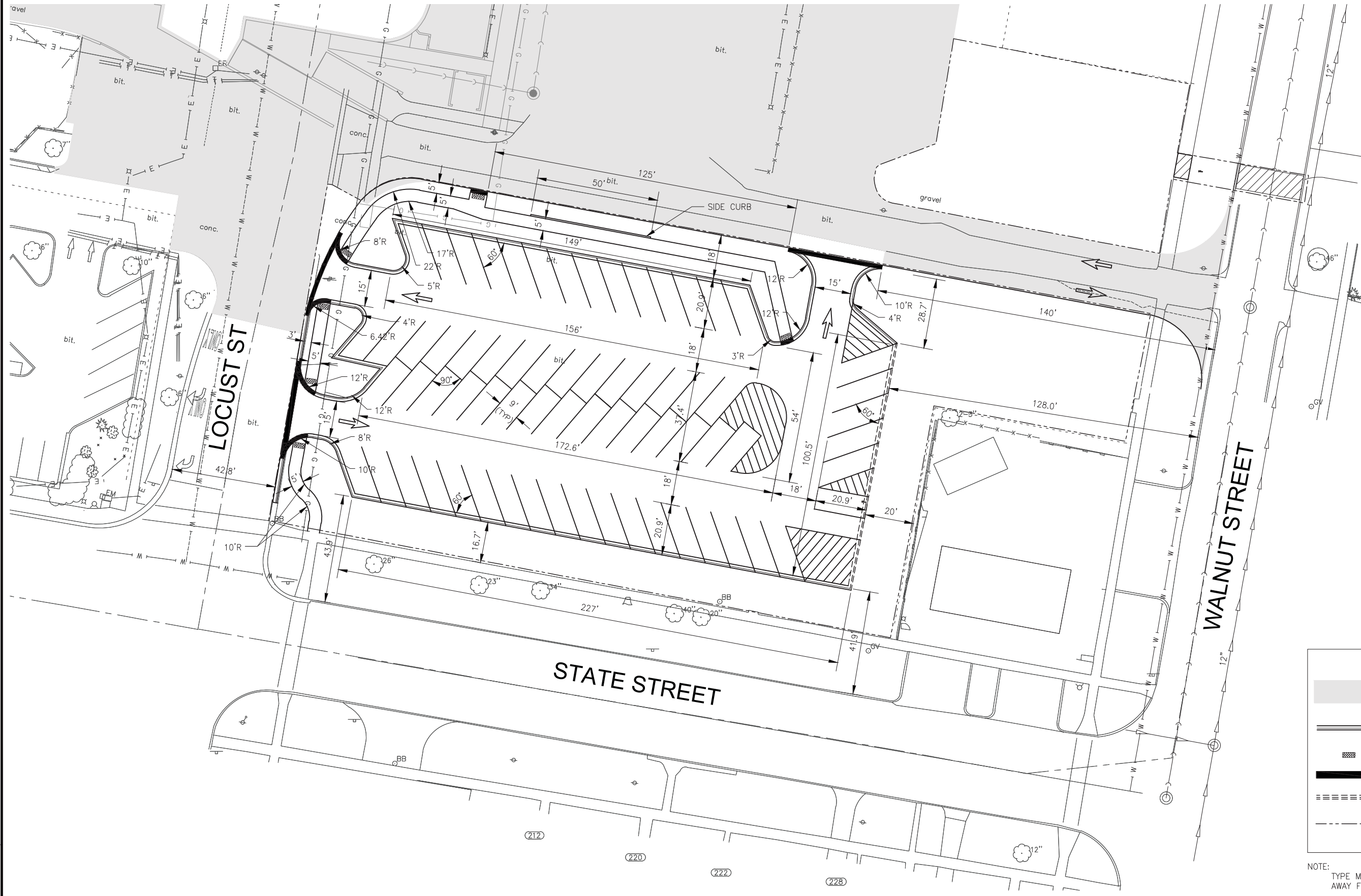
**SUMMARY OF QUANTITIES**

SCALE: PROJECT NO:110552.4 STA. TO STA.

F.A. RTE.	SECTION	COUNTY	TOTAL SHEETS	SHEET NO.
		DEKALB	10	3
FED. ROAD DIST. NO.		ILLINOIS FED. AID PROJECT		



SCALE: 1" = 20'



**LEGEND**

	SEPARATE PHASE (BY OTHERS)
	PR CURB AND GUTTER TY B-6.12
	DETECTABLE WARNING
	DEPRESSED CURB
	PR CURB AND GUTTER TY M-2.12
	PROJECT LIMIT LINE

NOTE: TYPE M-2.12 GUTTER TO BE PITCHED AWAY FROM PAVEMENT

I:\DEKALB\PSD0E\110522 DEKALB JAIL EXPANSION\CADD\DRAWINGS\110522-DESIGN-PRKGL0T-C3D14.DWG GEO-4  
Plotted: 9/28/2015 2:22 PM By: 607JES  
Copyright © 2015, By Baxter & Woodman, Inc.  
State of Illinois - Professional Design Firm  
License No. - 184-001121 - Expires 4-30-13



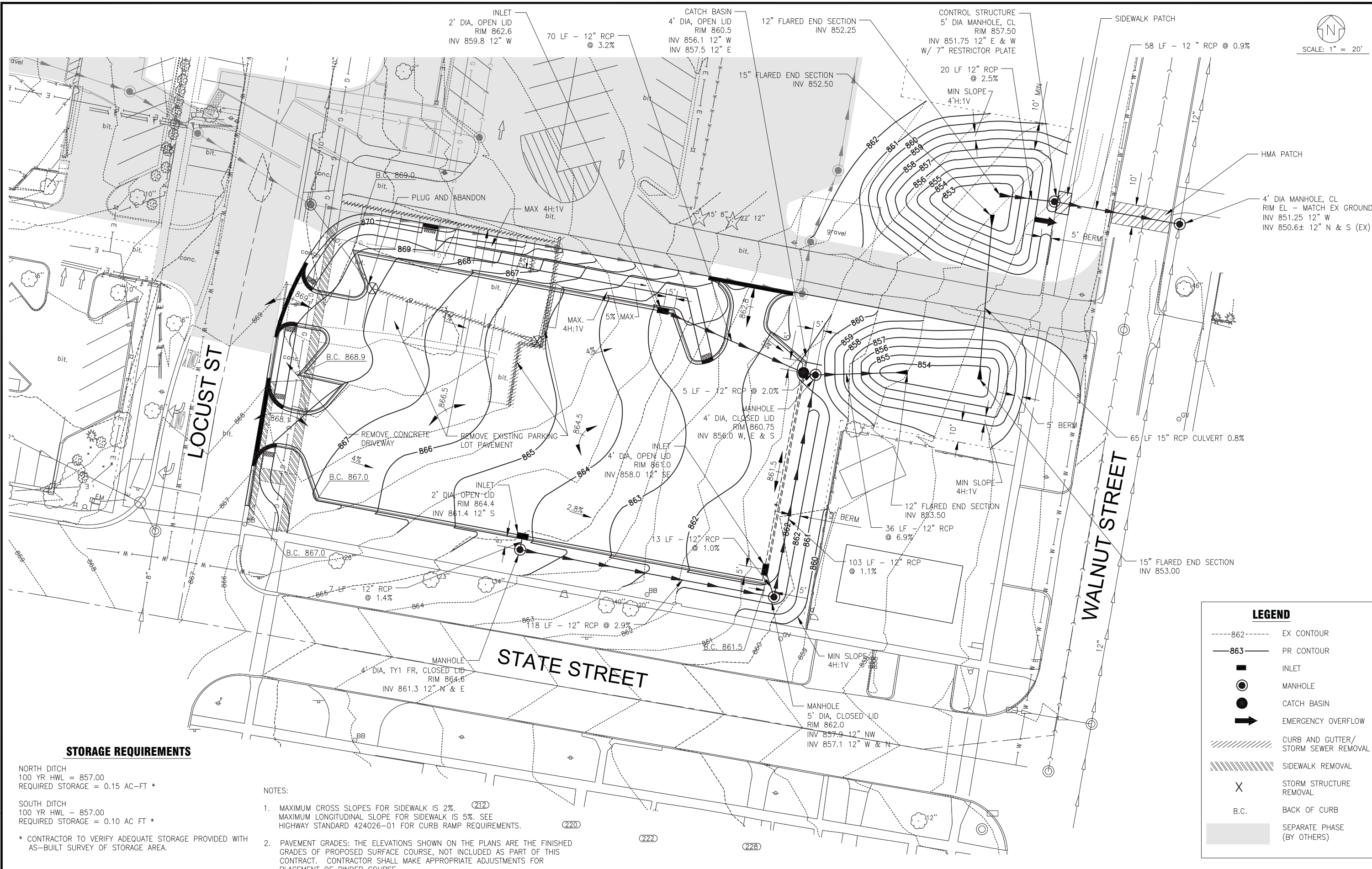
DESIGNED - JFM	REVISED -
DRAWN - UKB	REVISED -
CHECKED - JES	REVISED -
DATE - 9-24-15	REVISED -

**DEKALB COUNTY  
DEKALB COUNTY JAIL EXPANSION  
SOUTHEAST PARKING LOT**

**SOUTHEAST PARKING LOT  
PARKING LOT PLAN**

SCALE: HORIZ. 1"=20' PROJECT NO:110552.43 STA. TO STA.

F.A. RTE.	SECTION	COUNTY	TOTAL SHEETS	SHEET NO.
		DEKALB	10	4
FED. ROAD DIST. NO.	ILLINOIS FED. AID PROJECT			



**STORAGE REQUIREMENTS**

NORTH DITCH  
100 YR HWL = 857.00  
REQUIRED STORAGE = 0.15 AC-FT \*

SOUTH DITCH  
100 YR HWL = 857.00  
REQUIRED STORAGE = 0.10 AC FT \*

\* CONTRACTOR TO VERIFY ADEQUATE STORAGE PROVIDED WITH AS-BUILT SURVEY OF STORAGE AREA.

**NOTES:**

- MAXIMUM CROSS SLOPES FOR SIDEWALK IS 2%. (212)  
MAXIMUM LONGITUDINAL SLOPE FOR SIDEWALK IS 5%. SEE HIGHWAY STANDARD 424026-01 FOR CURB RAMP REQUIREMENTS. (220)
- PAVEMENT GRADES: THE ELEVATIONS SHOWN ON THE PLANS ARE THE FINISHED GRADES OF PROPOSED SURFACE COURSE, NOT INCLUDED AS PART OF THIS CONTRACT. CONTRACTOR SHALL MAKE APPROPRIATE ADJUSTMENTS FOR PLACEMENT OF BINDER COURSE. (226)

**LEGEND**

- 862--- EX CONTOUR
- 863— PR CONTOUR
- INLET
- MANHOLE
- CATCH BASIN
- ➔ EMERGENCY OVERTFLOW
- ▨ CURB AND GUTTER/STORM SEWER REMOVAL
- ▨ SIDEWALK REMOVAL
- X STORM STRUCTURE REMOVAL
- B.C. BACK OF CURB
- SEPARATE PHASE (BY OTHERS)

I:\DEKALB\PS00E\110522 DEKALB JAIL EXPANSION\CADD\DRAWINGS\110522-DESIGN-PRK\LOT-C3D14.DWG DU-5  
 Plotted: 9/28/2015 2:22 PM By: 607JES  
 Copyright © 2015, By: Baxter & Woodman, Inc.  
 State of Illinois - Professional Design Firm  
 License No. - 184-001121 - Expires 4-30-13



DESIGNED - JFM	REVISED -
DRAWN - UKB	REVISED -
CHECKED - JES	REVISED -
DATE - 9-24-15	REVISED -

**DEKALB COUNTY  
DEKALB COUNTY JAIL EXPANSION  
SOUTHEAST PARKING LOT**

**SOUTHEAST PARKING LOT  
DRAINAGE & GRADING**

SCALE: HORIZ. 1"=20' PROJECT NO: 110522.4 STA. TO STA.

F.A. RTE.	SECTION	COUNTY	TOTAL SHEETS	SHEET NO.
		DEKALB	10	5
FED. ROAD DIST. NO.	ILLINOIS FED. AID PROJECT			



SCALE: 1" = 20'

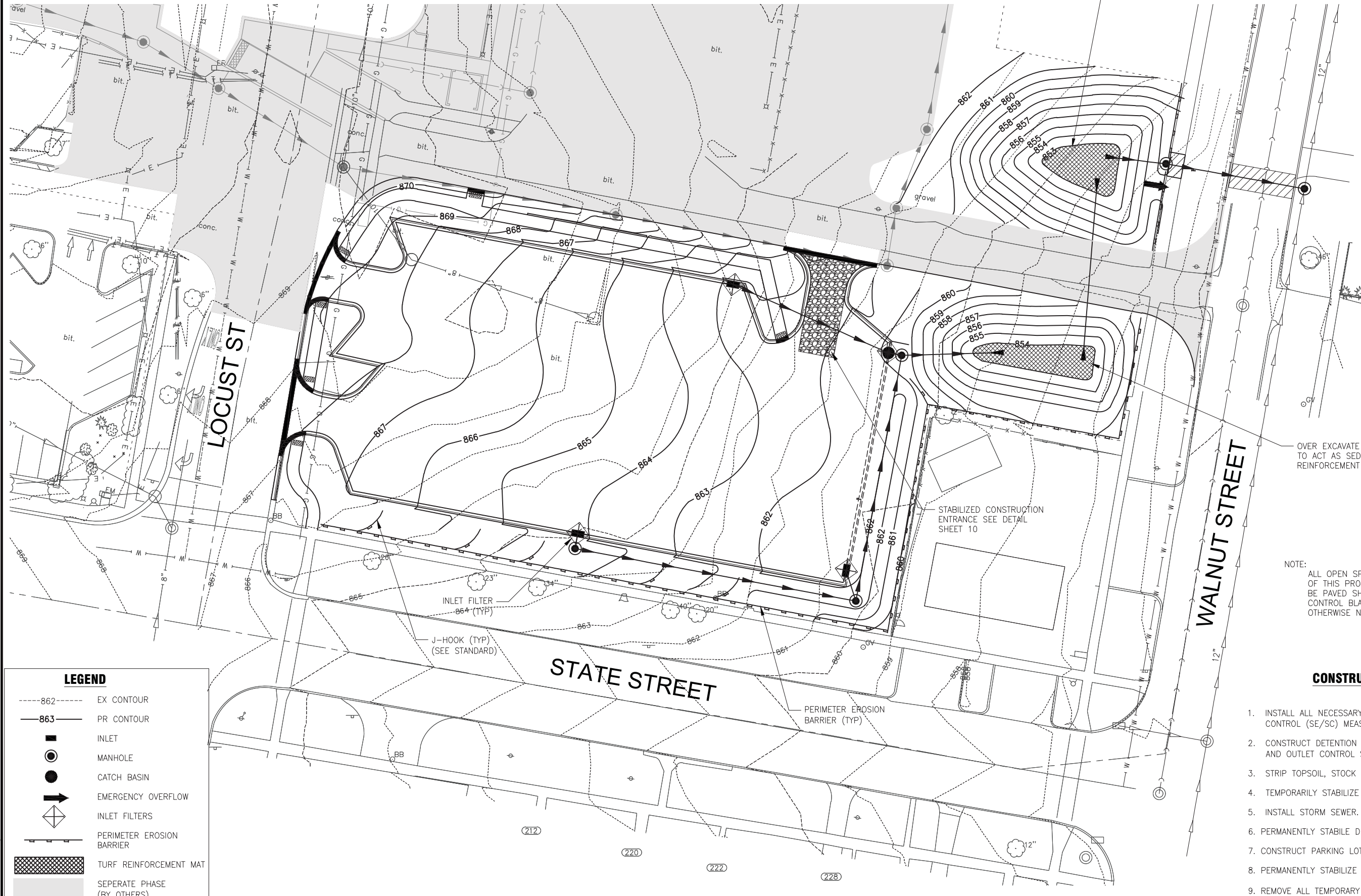
OVER EXCAVATE BOTTOM OF DETENTION AREA TO ACT AS SEDIMENT TRAP UNTIL TURF REINFORCEMENT MAT IS PLACED

OVER EXCAVATE BOTTOM OF DETENTION AREA TO ACT AS SEDIMENT TRAP UNTIL TURF REINFORCEMENT MAT IS PLACED

NOTE:  
ALL OPEN SPACE AREAS DISTURBED AS PART OF THIS PROJECT THAT IS NOT SCHEDULED TO BE PAVED SHALL BE SEEDDED WITH EROSION CONTROL BLANKET PLACED ON TOP UNLESS OTHERWISE NOTED ON PLANS.

### CONSTRUCTION SEQUENCE

1. INSTALL ALL NECESSARY SOIL EROSION AND SEDIMENT CONTROL (SE/SC) MEASURES.
2. CONSTRUCT DETENTION FACILITIES, SEDIMENT TRAPS, AND OUTLET CONTROL STRUCTURE W/ RESTRICTOR.
3. STRIP TOPSOIL, STOCK PILE TOPSOIL AND GRADE SITE.
4. TEMPORARILY STABILIZE STOCKPILES
5. INSTALL STORM SEWER.
6. PERMANENTLY STABILIZE DETENTION AREAS.
7. CONSTRUCT PARKING LOT
8. PERMANENTLY STABILIZE ALL OPEN SPACE AREAS.
9. REMOVE ALL TEMPORARY SE/SC MEASURES ONCE STABILIZE WITH VEGETATION.



**LEGEND**

- 862--- EX CONTOUR
- 863— PR CONTOUR
- INLET
- MANHOLE
- CATCH BASIN
- ⇨ EMERGENCY OVERFLOW
- ◇ INLET FILTERS
- ▬ PERIMETER EROSION BARRIER
- ▨ TURF REINFORCEMENT MAT
- ▭ SEPERATE PHASE (BY OTHERS)

I:\DEKALB\PSD0E\110522 DEKALB JAIL EXPANSION\CADD\DRAWINGS\110522-DESIGN-PRK\GLOT-C3D14.DWG Eros-6  
 Plotted: 9/28/2015 2:22 PM By: 607JES  
 Copyright © 2015, By Baxter & Woodman, Inc.  
 State of Illinois - Professional Design Firm  
 License No. - 184-001121 - Expires 4-30-13



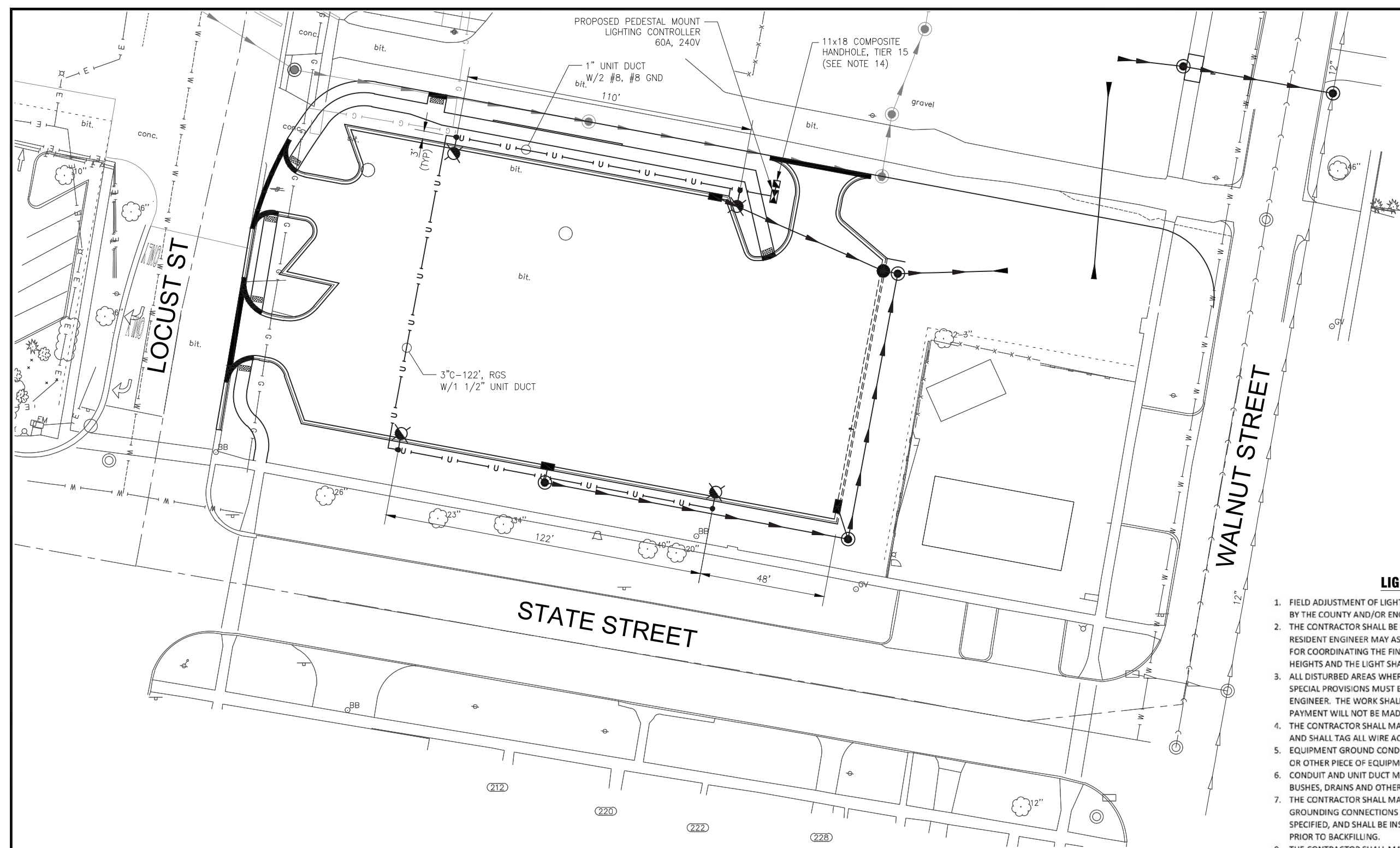
DESIGNED - JFM	REVISED -
DRAWN - UKB	REVISED -
CHECKED - JES	REVISED -
DATE - 9-24-15	REVISED -

**DEKALB COUNTY  
 DEKALB COUNTY JAIL EXPANSION  
 SOUTHEAST PARKING LOT**

**SOUTHEAST PARKING LOT  
 EROSION AND SEDIMENT CONTROL**

SCALE: HORIZ. 1"=20' PROJECT NO:110552.43 STA. TO STA.

F.A. RTE.	SECTION	COUNTY	TOTAL SHEETS	SHEET NO.
		DEKALB	10	6
FED. ROAD DIST. NO.		ILLINOIS FED. AID PROJECT		



**LIGHTING GENERAL NOTES**

1. FIELD ADJUSTMENT OF LIGHTING UNIT LOCATIONS TO AVOID CONFLICTS MUST BE APPROVED BY THE COUNTY AND/OR ENGINEER.
2. THE CONTRACTOR SHALL BE RESPONSIBLE FOR THE ESTABLISHMENT OF FINISHED GRADE. THE RESIDENT ENGINEER MAY ASSIST THE CONTRACTOR, AS APPLICABLE, BUT THE RESPONSIBILITY FOR COORDINATING THE FINISHED GRADE ELEVATION WITH THE TOP OF FOUNDATION HEIGHTS AND THE LIGHT SHALL REMAIN WITH THE CONTRACTOR.
3. ALL DISTURBED AREAS WHERE RESTORATION IS NOT COVERED BY APPLICABLE SECTIONS OF THE SPECIAL PROVISIONS MUST BE RESTORED TO THE SATISFACTION OF THE COUNTY AND/OR ENGINEER. THE WORK SHALL BE CONSIDERED INCIDENTAL TO THE CONTRACT. SEPARATE PAYMENT WILL NOT BE MADE.
4. THE CONTRACTOR SHALL MAKE SPECIAL NOTE OF THE REQUIREMENTS FOR WIRE MARKERS AND SHALL TAG ALL WIRE ACCORDINGLY.
5. EQUIPMENT GROUND CONDUCTORS SHALL BE SPLICED AND/OR BONDED AT EACH LIGHT POLE OR OTHER PIECE OF EQUIPMENT.
6. CONDUIT AND UNIT DUCT MUST BE POSITIONED IN THE FIELD TO AVOID CONFLICT WITH TREES, BUSHES, DRAINS AND OTHER UTILITIES AND LANDSCAPING.
7. THE CONTRACTOR SHALL MAKE SPECIAL NOTE OF THE REQUIREMENTS FOR GROUNDING. GROUNDING CONNECTIONS AT THE FOUNDATION SHALL BE EXOTHERMICALLY WELDED, AS SPECIFIED, AND SHALL BE INSPECTED AND APPROVED BY THE COUNTY AND/OR ENGINEER PRIOR TO BACKFILLING.
8. THE CONTRACTOR SHALL MAKE SPECIAL NOTE OF THE REQUIREMENTS FOR BURIED WARNING TAPE, SPECIFIED AS PART OF "UNDERGROUND RACEWAYS". THE INSTALLATION OF THE TAPE SHALL BE INSPECTED AND APPROVED BY THE COUNTY AND/OR ENGINEER PRIOR TO BACKFILLING.
9. NO POLES SHALL BE ERECTED UNTIL THE RESPECTIVE FOUNDATIONS HAVE CURED, AS APPROVED BY THE COUNTY AND/OR ENGINEER.
10. ALL CONDUITS UNDER ROADWAYS AND DRIVEWAYS IN TRENCHES SHALL BE INSTALLED BEFORE PAVEMENT IS PLACED. CONDUIT LENGTHS ARE APPROXIMATE. THE CONTRACTOR SHALL VERIFY THE ACTUAL LENGTH REQUIREMENTS IN THE FIELD.
11. NO UNDERGROUND SPLICES OR SPLICES IN HANDHOLES WILL BE PERMITTED. ELECTRIC HANDHOLES SHALL BE USED FOR THE PURPOSE OF PULLING CABLES ONLY.
12. LIGHTING UNIT SETBACK SHALL BE 3 FEET FROM BACK OF CURB TO CENTER OF BASE, OR AS INDICATED ON PLANS.
13. ALL ELECTRICAL DEVICES AND MATERIALS SHALL BE U/L LISTED WHERE APPLICABLE.
14. ROUTE SPARE CONDUIT FROM LIGHTING CONTROLLER INTO HANDHOLE. CAP CONDUIT FOR FUTURE USE.

I:\DEKALB\PS00E\110522 DEKALB JAIL EXPANSION\CADD\DRAWINGS\110522-DESIGN-PRKGL0T-C3D14.DWG Lighting  
 Plotted: 9/29/2015 1:54 PM By: 231UKB  
 Copyright © 2015, By Baxter & Woodman, Inc.  
 State of Illinois - Professional Design Firm  
 License No. - 184-001121 - Expires 4-30-13

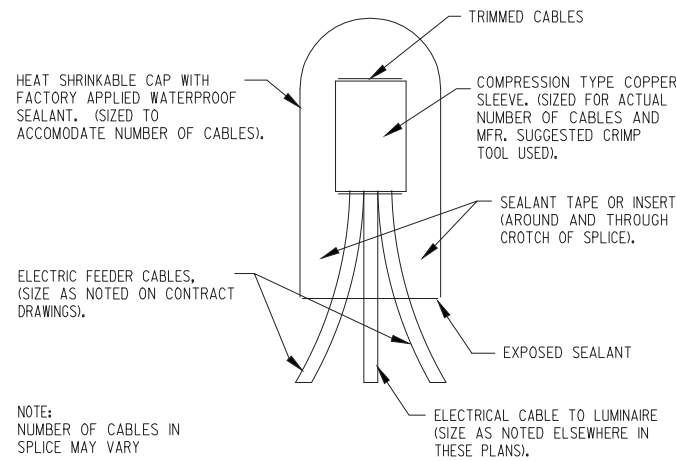
<b>BAXTER &amp; WOODMAN</b> Consulting Engineers	DESIGNED - JFM	REVISED -
	DRAWN - UKB	REVISED -
	CHECKED - JES	REVISED -
	DATE - 9-24-15	REVISED -

**DEKALB COUNTY**  
**DEKALB COUNTY JAIL EXPANSION**  
**SOUTHEAST PARKING LOT**

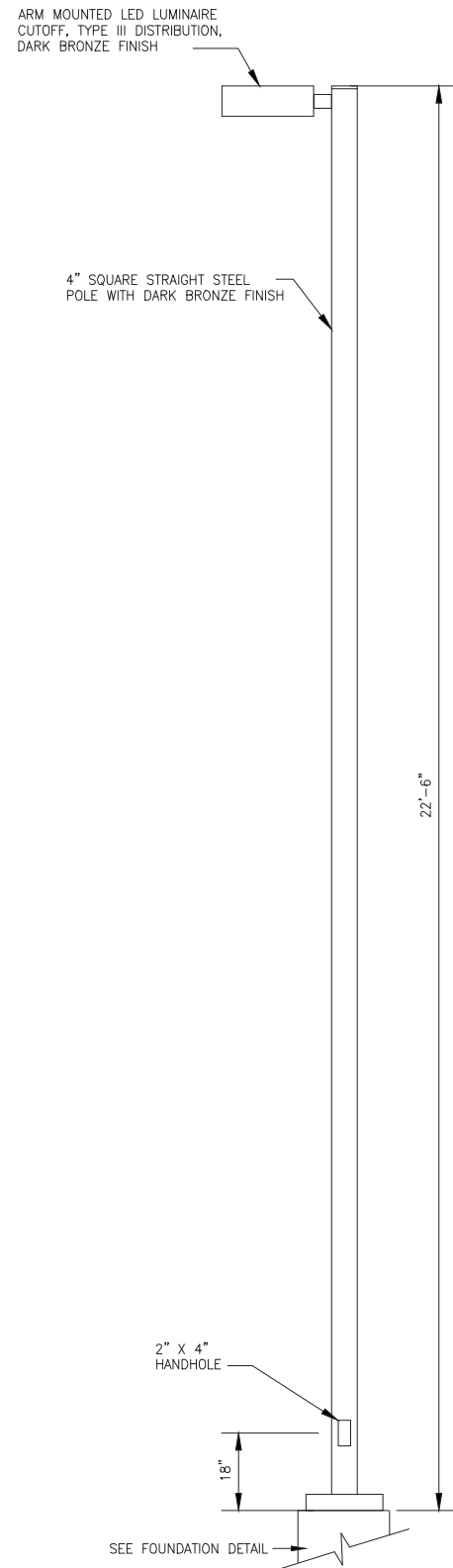
**SOUTHEAST PARKING LOT**  
**LIGHTING PLAN**

SCALE: HORIZ. 1"=20' PROJECT NO: 110552.4 STA. TO STA.

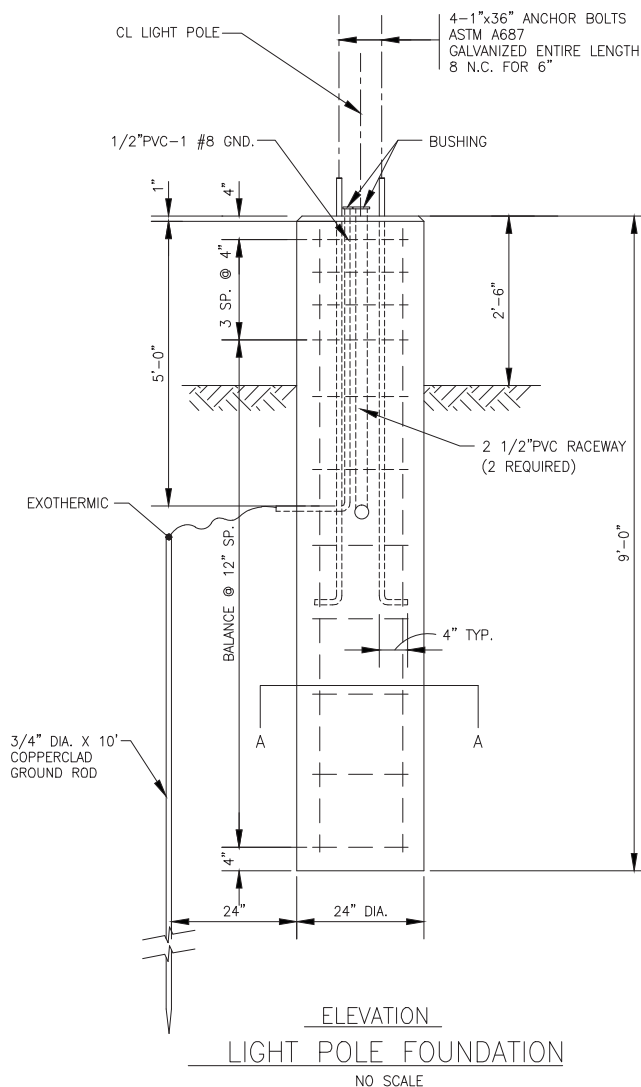
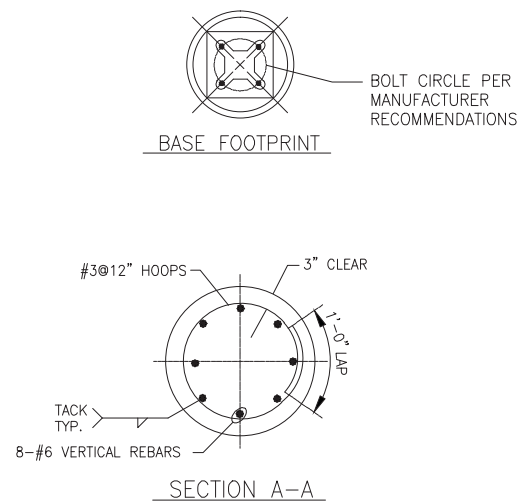
F.A. RTE.	SECTION	COUNTY	TOTAL SHEETS	SHEET NO.
		DEKALB	10	7
FED. ROAD DIST. NO.		ILLINOIS FED. AID PROJECT		



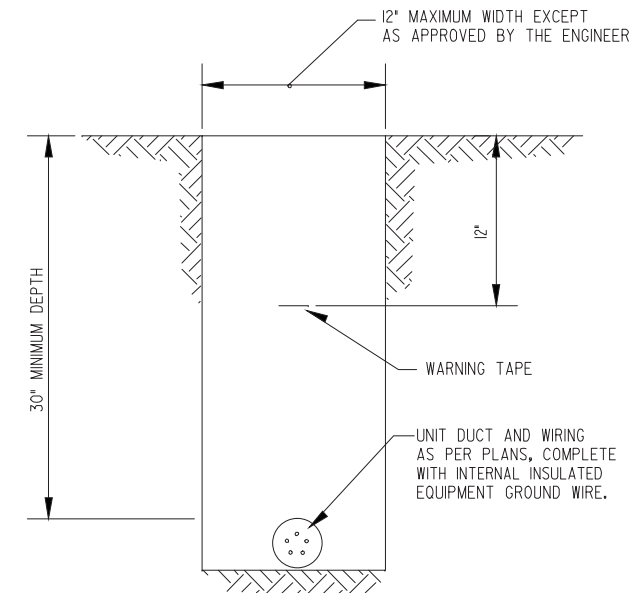
**SPLICING ELECTRICAL CABLES**  
**BASIC MATERIALS AND METHODS**  
 NO SCALE



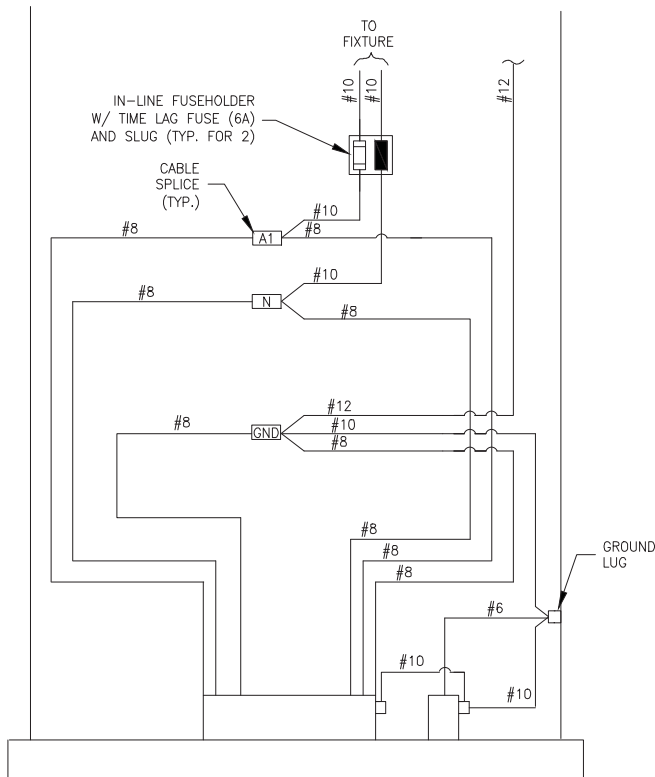
**LIGHT POLE WITH LUMINAIRE, 25' M.H.**  
 NO SCALE



**ELEVATION**  
**LIGHT POLE FOUNDATION**  
 NO SCALE



**TYPICAL WIRING IN TRENCH DETAIL**  
 NO SCALE



**POLE BASE WIRING DETAIL**  
 NO SCALE

**NOTES:**

1. THE ANCHOR RODS AND RACEWAYS SHALL BE PROPERLY CENTERED AND SECURED IN PLACE BEFORE THE CONCRETE IS PLACED.
2. CONCRETE SHALL BE 3500 PSI AT 14 DAYS (CLASS SJ).
3. THE HOLE FOR THE FOUNDATION SHALL BE MADE WITH AN AUGER OF THE SAME DIAMETER AS THE FOUNDATION. IF SOIL CONDITIONS REQUIRE THE USE OF A LINER TO FORM THE HOLE, THE LINER SHALL BE WITHDRAWN AS THE CONCRETE IS DEPOSITED.
4. THE TOP OF THE FOUNDATION SHALL BE CONSTRUCTED LEVEL. A LINER OR FORM SHALL BE USED TO PRODUCE A UNIFORM SMOOTH SIDE TO THE TOP OF THE FOUNDATION. FOUNDATION TOP SHALL BE CHAMFERED 1 INCH.
5. CABLE TRENCHES AND FOUNDATIONS SHALL BE BACKFILLED AND COMPACTED, AND CONCRETE CURED ACCORDING TO APPLICABLE STANDARDS BEFORE LIGHT POLES MAY BE INSTALLED.
6. THE ANCHOR ROD SHALL BE A HOOK ROD TYPE. COLD BENDING OF THE ANCHOR ROD WILL NOT BE ALLOWED. THE ANCHOR ROD SHALL BE THREADED A MINIMUM OF 6 INCHES WITH A MINIMUM OF 3" OF THREADED ANCHOR ROD EMBEDDED IN THE FOUNDATION AND PROJECT A MINIMUM OF 2 3/4" ABOVE THE TOP OF THE FOUNDATION. IF BREAKAWAY COUPLINGS ARE SPECIFIED THE CONTRACTOR SHALL CAREFULLY COORDINATE THE ANCHOR ROD PROJECTION WITH THE INSTALLATION REQUIREMENTS OF THE BREAKAWAY COUPLINGS.
7. THE CONTRACTOR MAY USE A #3 SPIRAL AT 6" PITCH OR #3 TIES AT 12" O.C.
8. RACEWAYS SHALL PROJECT 1" ABOVE THE TOP OF THE FOUNDATION.

I:\DEKALB\PSADE\110552 DEKALB JAIL EXPANSION\CADD\DRAWINGS\110552-SL-DETAILS.DWG 01  
 Plotted: 9/29/2015 2:48 PM By: 231UKB  
 Copyright © 2015, By: Baxter & Woodman, Inc.  
 State of Illinois Professional Design Firm  
 License No. - 184-001121 - Expires 4-30-13



DESIGNED - MWH	REVISED -
DRAWN - UKB	REVISED -
CHECKED - MWH	REVISED -
DATE - 9-24-15	REVISED -

**DEKALB COUNTY**  
**DEKALB COUNTY JAIL EXPANSION**  
**SOUTHEAST PARKING LOT**

**LIGHTING DETAILS**

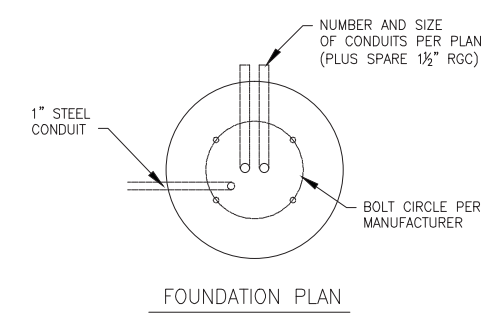
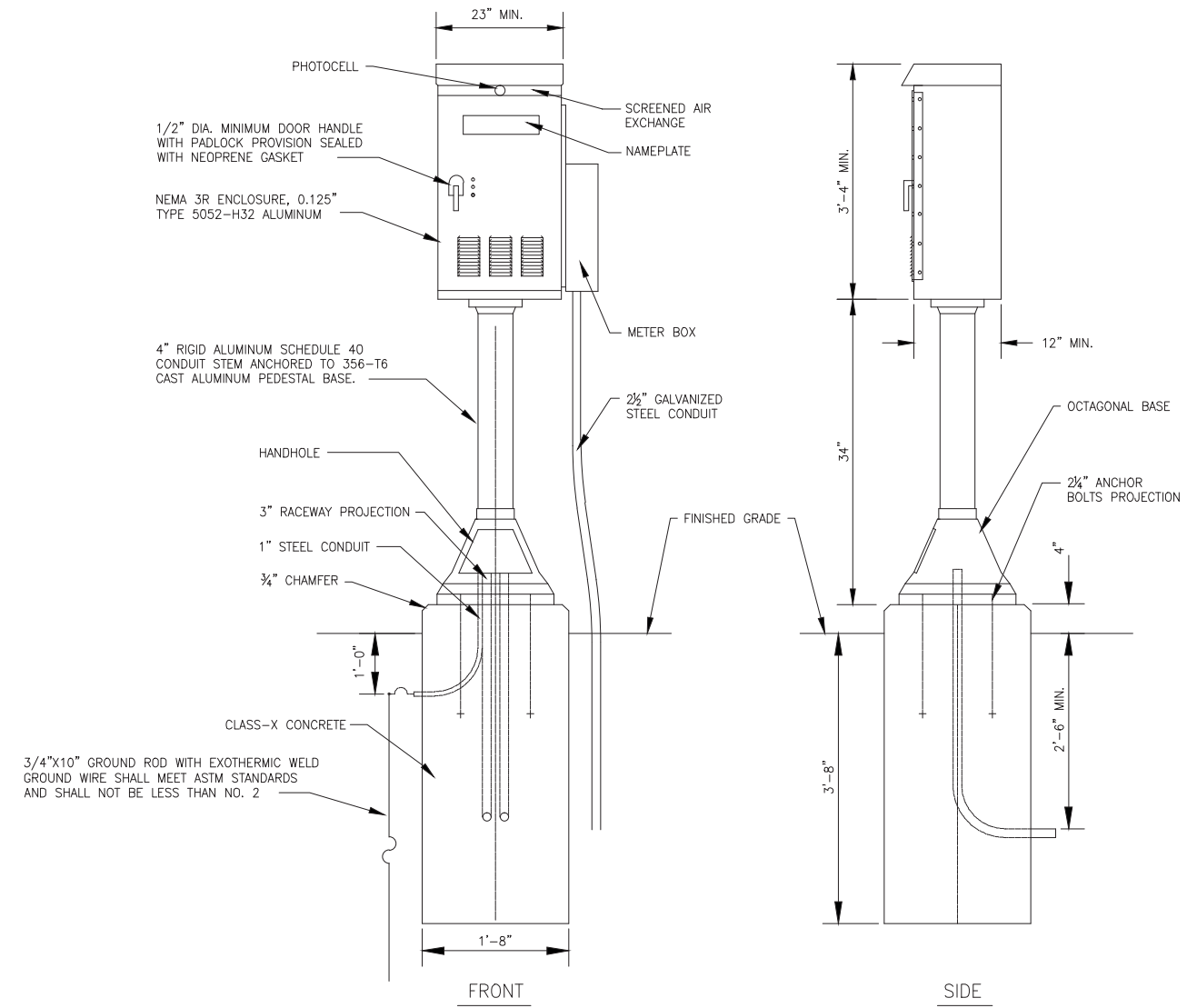
SCALE: PROJECT NO: 110552.4 STA. TO STA.

F.A. RTE.	SECTION	COUNTY	TOTAL SHEETS	SHEET NO.
		DEKALB	10	8
FED. ROAD DIST. NO.		ILLINOIS FED. AID PROJECT		

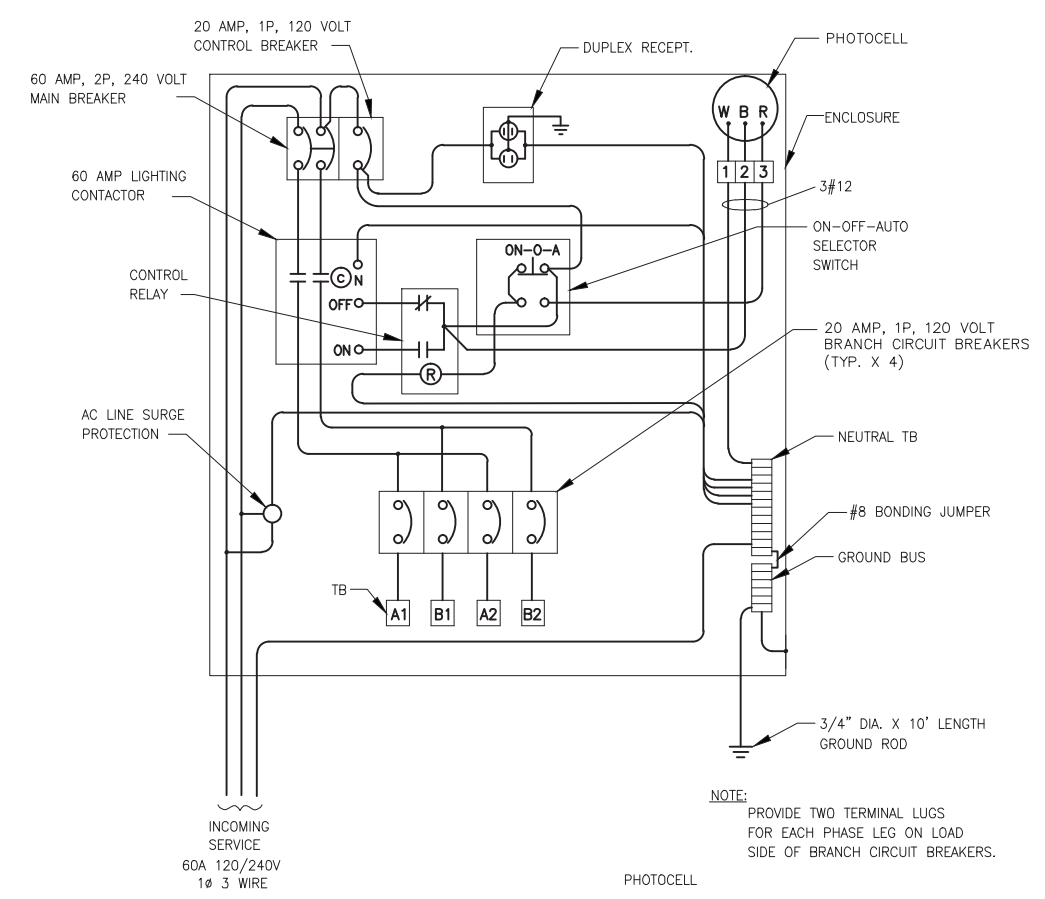


NOTES:

- CABINET SHALL BE FABRICATED FROM 0.125-INCH SHEET ALUMINUM #3003H14, FORMED AND ARC WELDED ASSEMBLY WITH NEMA 3R RATING.
- ALL SCREWS AND HARDWARE SHALL BE PLATED, GALVANIZED, OR MADE OF BRASS, ALUMINUM OR STAINLESS STEEL.
- NAME PLATE SHALL HAVE ENGRAVED 0.75-INCH HIGH LETTERS FILLED IN BLACK: "CITY OF DEKALB PARKING LOT 11".
- CONNECTION OF SURGE ARRESTOR TO LINE SIDE OF MAIN CIRCUIT SHALL NOT BE "DOUBLE LUGGED".
- ELECTRIC UTILITY METER BOX SHALL BE MOUNTED ON THE SIDE OF CONTROL CABINET.
- THE COMPLETED CONTROLLER SHALL BE U.L. LISTED AS AN INDUSTRIAL CONTROL PANEL UNDER UL508, AND SHOULD BE SERVICE ENTRANCE RATED.
- METAL MOUNTING PANEL SHALL BE #10 GAUGE GALVANIZED SHEET STEEL FLANGED BACK 0.75-INCHES I.D. ON 4 SIDES.
- CIRCUIT BREAKERS AND CONTACTORS AND OTHER COMPONENTS SHALL BE MOUNTED ON 0.125-INCH THICK GLASTIC INSULATION BACK PANEL.
- ALL DEVICES SHALL BE FRONT REMOVABLE.
- BUS BAR SHALL HAVE 12 LUG TERMINALS SIZED TO ACCOMMODATE REQUIRED WIRE SIZES. NEUTRAL BUS SHALL BE PAINTED WHITE. GROUND BUS SHALL BE PAINTED GREEN.
- ALL LUGS SHALL BE COPPER SCREWS AND CONNECTORS, SPRING HELD.
- ALL WIRING TERMINATIONS SHALL BE RATED NOT LESS THAN 75 DEGREE CENTIGRADE.
- ALL CONTROL WIRING SHALL BE 600V MACHINE TOOL WIRE TYPE MTW.
- ALL POWER WIRING SHALL BE 600V TYPE RHH/RHW.
- A LAMINATED COPY OF THE CIRCUIT SCHEMATIC DIAGRAM SHALL BE ATTACHED TO THE INSIDE OF THE CONTROLLER.
- ALL 120 VOLT SYSTEM AND ALL CONTROL WIRING SHALL BE #12 AWG STRANDED UNLESS OTHERWISE INDICATED.
- ALL WIRING SHALL BE IDENTIFIED BY MANUFACTURER COLOR CODED INSULATION, NEATLY DRESSED AND SUPPORTED.
- INCLUDE SAFETY LABELS ON MAIN BREAKER, "WARNING-THIS DISCONNECT DOES NOT REMOVE ALL POWER FROM THIS PANEL".
- LABOR AND MATERIALS FOR CONTROLLER FOUNDATION ARE INCIDENTAL TO THE COST OF THE CONTROLLER.
- END USER TO SELECT FINISH COLOR FROM COLOR CHART PROVIDED BY CONTRACTOR IN CONTROLLER SUBMITTAL.
- CONSTRUCT 36" X 36" X 4" (MIN. SIZE) CONCRETE PAD IN FRONT OF CONTROLLER. LABOR AND MATERIALS ARE INCIDENTAL TO THE COST OF THE CONTROLLER.



I:\DEKALB\PSADE\110552 DEKALB JAIL EXPANSION\CADD\DRAWINGS\110552-SL-DETAILS.DWG 02  
 Plotted: 9/29/2015 2:04 PM By: 231UKB  
 Copyright © 2015, By: Baxter & Woodman, Inc.  
 State of Illinois Professional Design Firm  
 License No. 184-001121 - Expires 4-30-13



NOTE:  
 PROVIDE TWO TERMINAL LUGS FOR EACH PHASE LEG ON LOAD SIDE OF BRANCH CIRCUIT BREAKERS.

LIGHTING CONTROLLER WIRING DIAGRAM  
 NO SCALE



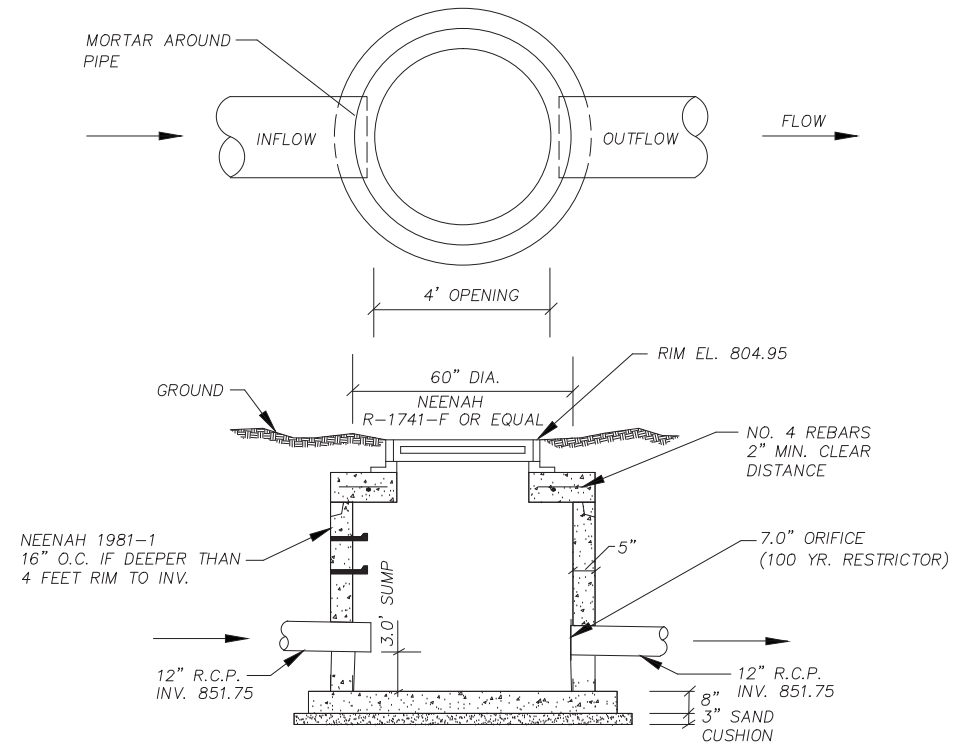
DESIGNED - MWH	REVISED -
DRAWN - UKB	REVISED -
CHECKED - MWH	REVISED -
DATE - 9-24-15	REVISED -

**DEKALB COUNTY  
 DEKALB COUNTY JAIL EXPANSION  
 SOUTHEAST PARKING LOT**

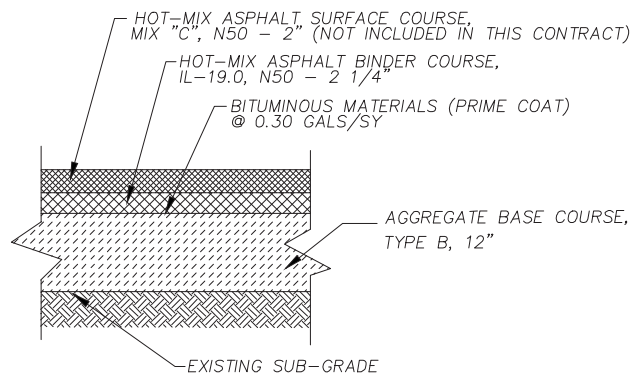
**LIGHTING CONTROLLER DETAILS**

SCALE: PROJECT NO: 110552.4 STA. TO STA.

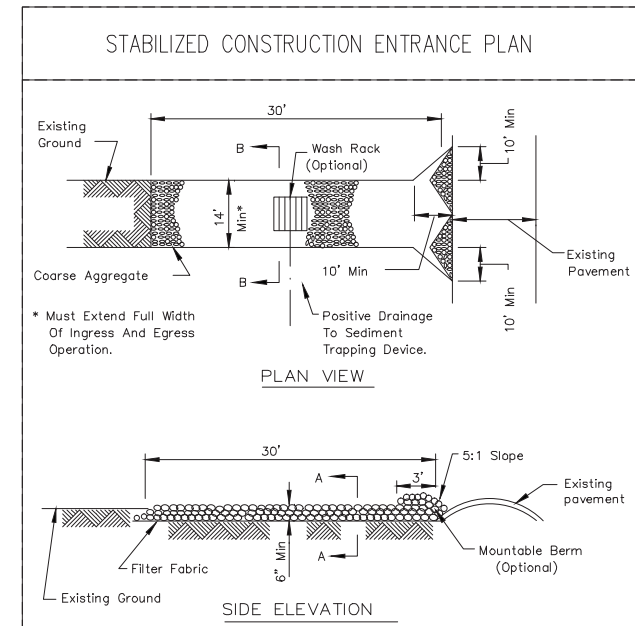
F.A. RTE.	SECTION	COUNTY	TOTAL SHEETS	SHEET NO.
		DEKALB	10	9
FED. ROAD DIST. NO.	ILLINOIS	FED. AID PROJECT		



**MANHOLES, WITH RESTRICTOR PLATE**



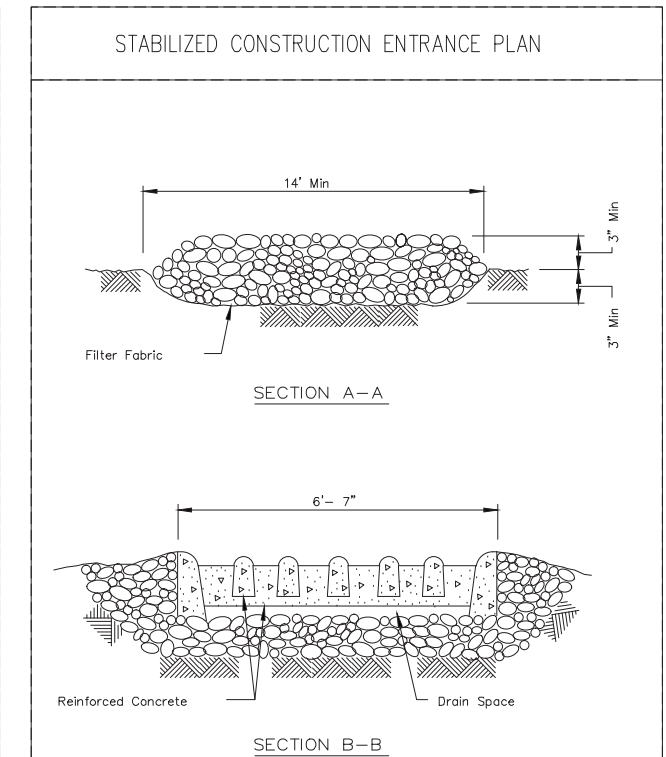
**TYPICAL SECTION FOR PARKING LOT**  
NO SCALE



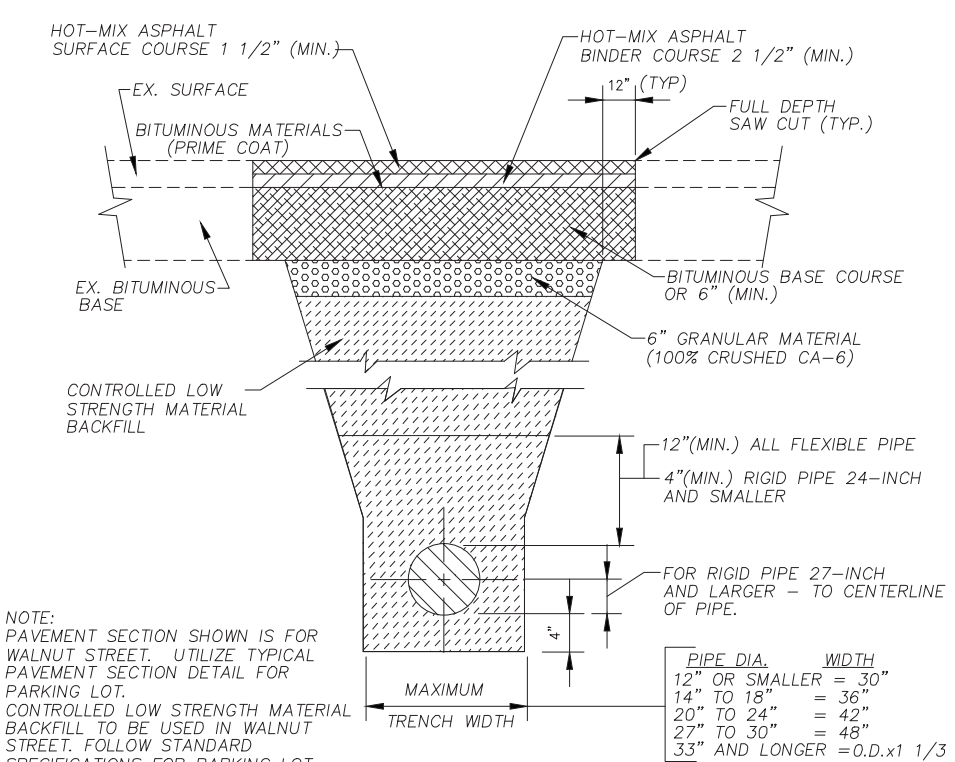
**NOTES:**

- Filter fabric shall meet the requirements of material specification 592 GEOTEXTILE, Table 1 or 2, Class .1 II or IV and shall be placed over the cleared area prior to the placing of rock.
- Rock or reclaimed concrete shall meet one of the following IDOT coarse aggregate gradation, CA-1, CA-2, CA-3 or CA-4 and be placed according to Construction Specification 25 ROCKFILL using placement Method 1 and Class III compaction.
- Any drainage facilities required because of washing shall be constructed according to manufacturers specifications.
- If wash racks are used they shall be installed according to the manufactures specifications.

REFERENCE Project	U.S. DEPARTMENT OF AGRICULTURE NATURAL RESOURCES CONSERVATION SERVICE	STANDARD DWG. NO. AR-ENG-709
Designed	ENGINEERING DESIGN SECTION LITTLE ROCK, ARKANSAS	SHEET 1 OF 2
Checked	(ADOPTED FROM ILLINOIS IL-630)	DATE 8-18-94
Approved		

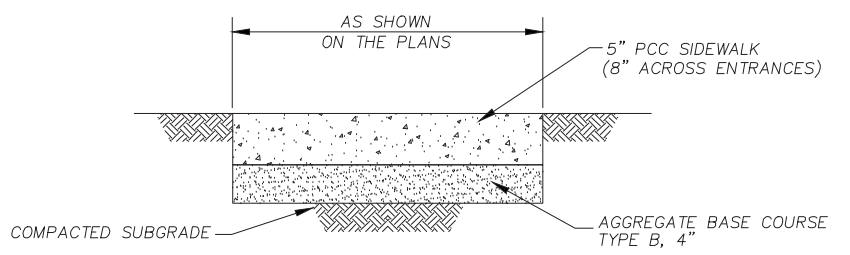


REFERENCE Project	U.S. DEPARTMENT OF AGRICULTURE NATURAL RESOURCES CONSERVATION SERVICE	STANDARD DWG. NO. AR-ENG-709
Designed	ENGINEERING DESIGN SECTION LITTLE ROCK, ARKANSAS	SHEET 2 OF 2
Checked	(ADOPTED FROM ILLINOIS IL-630)	DATE 8-18-94
Approved		



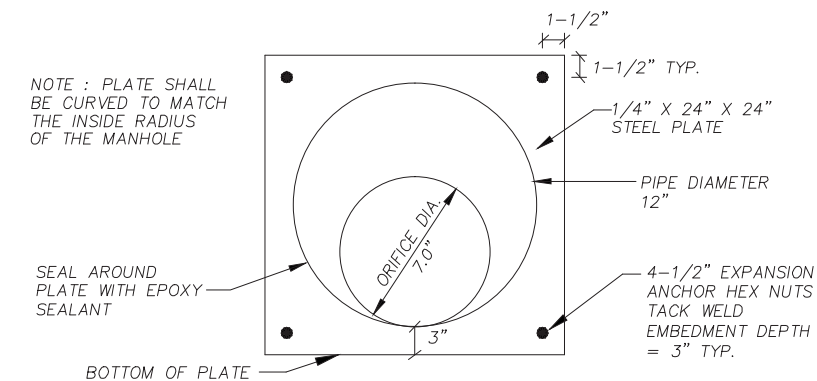
**TYPICAL TRENCH DETAIL**  
NO SCALE

FOR PAVEMENT WITH AGGREGATE BASE AND COMPACTED GRANULAR BACKFILL MATERIAL  
FOR RIGID PIPE COMPLY WITH ASTM C12, BEDDING CLASS B.



**NOTE:** PROVIDE FIBER 3/4" EXPANSION JOINTS WHERE NEW SIDEWALK MEETS EXISTING AND AT 50' O.C. MAX. AND PROVIDE CONTROL JOINTS AT 5' O.C.

**PORTLAND CEMENT CONCRETE (P.C.C.) SIDEWALK, 5-INCH**  
NO SCALE



**NOTE:** THE RESTRICTOR PLATE AND FASTNERS SHALL BE FABRICATED IN STAINLESS STEEL OR IN DUCTILE IRON

**ORIFICE DETAIL**

I:\DEKALB\PSIDE\110522 DEKALB JAIL EXPANSION\CADD\DRAWINGS\110552-MISC-DETAILS.DWG DETS-1  
 Plotted: 9/28/2015 2:22 PM By: 607JES  
 Copyright © 2015, By: Baxter & Woodman, Inc.  
 State of Illinois - Professional Design Firm  
 License No. - 184-001121 - Expires 4-30-13



DESIGNED - JFM	REVISED -
DRAWN - UKB	REVISED -
CHECKED - JES	REVISED -
DATE - 9-24-15	REVISED -

**DEKALB COUNTY**  
**DEKALB COUNTY JAIL EXPANSION**  
**SOUTHEAST PARKING LOT**

<b>MISCELLANEOUS DETAILS</b>	
SCALE:	PROJECT NO: 110552.43 STA. TO STA.

F.A. RTE.	SECTION	COUNTY	TOTAL SHEETS	SHEET NO.
		DEKALB	10	10
FED. ROAD DIST. NO.		ILLINOIS		FED. AID PROJECT