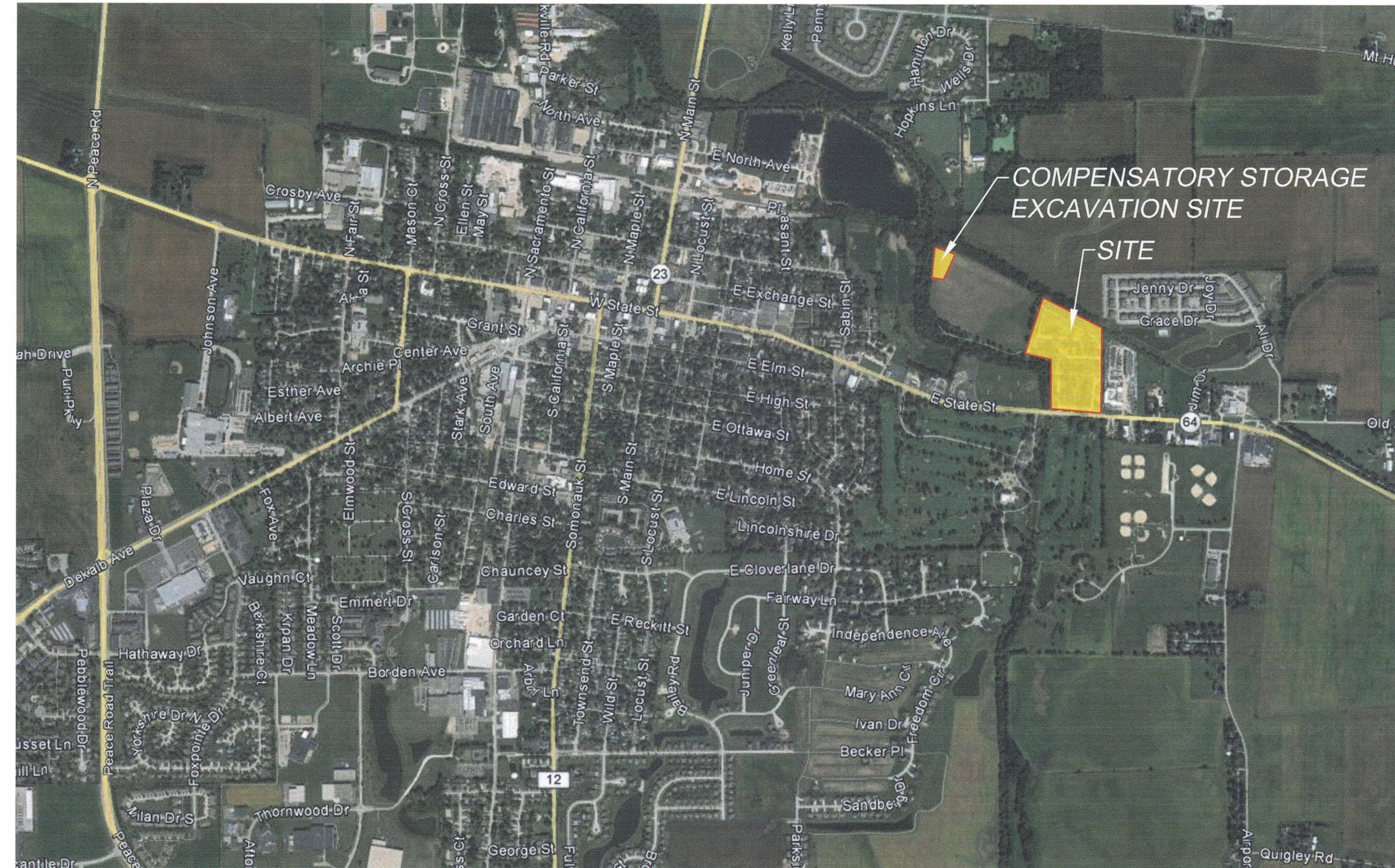


LETTING: AUGUST 17, ~~2017~~
2016

PROPOSED SITE IMPROVEMENT PLANS
OF
SYCAMORE FOREST PRESERVE (EVERGREEN VILLAGE)
DEKALB COUNTY FOREST PRESERVE DISTRICT
DEKALB COUNTY
2016

INDEX OF SHEETS

1. COVER SHEET
2. GENERAL NOTES & SUMMARY OF QUANTITIES
3. OVERALL PLAN
4. EXISTING SITE & DEMOLITION PLAN
5. PAVEMENT PLAN
6. NORTH CONNECTION PATH STRIPING & SIGNAGE PLAN
7. COMPENSATORY STORAGE EXCAVATION
8. STORM WATER POLLUTION PREVENTION PLAN
- 9.



LOCATION MAP
SYCAMORE, ILLINOIS

LEGEND

TOPOGRAPHIC	SURVEY
— BOUNDARY OF SURVEY	● STEEL PIN FOUND
- - - SECTION LINE	○ STEEL PIN SET
- - - RIGHT OF WAY LINE	⊙ SET SURVEY NAIL
- - - CENTERLINE	⊕ R.O.W. MARKER
- - - BUILDING SETBACK (BSL)	+ CHISELED "X"
- - - EASEMENT (UE)	▲ STONE FOUND
G GAS MAIN	
W WATERMAIN	
OE OVERHEAD ELECTRIC LINE	
UE UNDERGROUND ELECTRIC	
OT OVERHEAD TELEPHONE LINE	
UT UNDERGROUND TELEPHONE	
FO FIBER OPTIC LINE	
X - X - X FENCE LINE	
— STORM SEWER	
— SANITARY SEWER	
— CURB AND GUTTER	
— DEPRESSIONED CURB	
— EXISTING CONTOUR LINE	
⊠ MANHOLE FOR ELECTRIC	← PROPOSED SANITARY SEWER
— GUY WIRE	⊙ PROPOSED SANITARY MANHOLE
★ STREET LIGHT	⊙ PROPOSED SANITARY SERVICE
⊙ FIRE HYDRANT	— PROPOSED WATER MAIN
⊙ MANHOLE	— PROPOSED WATER SERVICE
⊙ CLEANOUT	— PROPOSED WATER VALVE
⊙ WATER VALVE	⊙ PROPOSED FIRE HYDRANT
⊙ GAS VALVE	— PROPOSED STORM SEWER
⊙ DROP INLET	— PROPOSED STORM INLET
⊙ INLET	⊙ PROPOSED STORM MANHOLE
⊙ SIGN	— PROPOSED DRAIN TILE
	— PROPOSED END SECTION
	— PROPOSED RIP RAP
	— PROPOSED DIRECTION OF FLOW
	— PROPOSED 100 YEAR FLOOD ROUTE
	T.F.E. TOP OF FOUNDATION
	— PROPOSED CONTOUR LINE
	— PROPOSED CURB & GUTTER

CONTOUR & GIS DATA

THE CONTOUR DATA AND PROPERTY LINE INFORMATION SHOWN HEREON IS BASED UPON GIS DATA & LIDAR DATA ACQUIRED FROM DEKALB COUNTY. WENDLER ENGINEERING SERVICES, INC. MAKES NO WARRANTIES, EXPRESSED OR IMPLIED TO THE ACCURACY OF THE DATA, THE ERRORS CAUSED BY WORK OR INFORMATION PROVIDED BY OTHERS.

BENCHMARK INFORMATION

BM "A" - SET CHISELED "X" ON EAST BONNET BOLT OF FIRE HYDRANT ● EAST ENTRANCE TO THE PARK
ELEV: 833.30

BM "B" - SET CHISELED "X" ON WEST BONNET BOLT OF FIRE HYDRANT ● WEST ENTRANCE TO THE PARK
ELEV: 834.16

UTILITY NOTE:

THE LOCATION AND SIZE OF UNDERGROUND UTILITIES SHOWN ON THIS DRAWING ARE BASED UPON INFORMATION PROVIDED BY OTHERS. WENDLER ENGINEERING SERVICES, INC. MAKES NO GUARANTEE OR WARRANTY, EXPRESSED OR IMPLIED, FOR THE ACCURACY AND LOCATION OF THE UNDERGROUND UTILITIES. CONTACT J.L.L.L.E. AT 1-800-892-0123 A MINIMUM OF 48 HOURS BEFORE YOU DIG.

REVISIONS	DATE

DESIGNED BY: SAB	DRAWN BY: BDS	SUBMITTED BY:	BOOK NO.:
---------------------	------------------	---------------	-----------

wendler
wender engineering services, inc.
GROUND-BREAKING SOLUTIONS
engineers - surveyors - scientists
www.wendlers.com ph: 815.288.2251
Illinois Professional Design Firm No. 104-000946

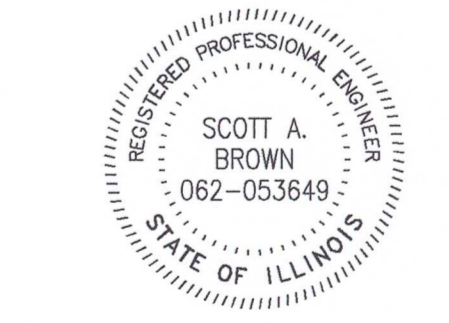
PROPOSED SITE IMPROVEMENTS
OF
SYCAMORE FOREST PRESERVE (EVERGREEN VILLAGE)
FOR
DEKALB COUNTY FOREST PRESERVE DISTRICT

SHEET TITLE
COVER SHEET

JOB NUMBER
2160123

DATE
06/30/2016

SHEET NO.
1 of 9



Scott A. Brown 8/1/2016
DATE
SCOTT A. BROWN
DIXON, ILLINOIS
ILLINOIS LICENSED PROFESSIONAL
ENGINEER NO. 062-053649
EXPIRES 11-30-2017