

## September 2016 Progress

➤ Photo taken September 2, 2016





## September 2016 Progress

➤ Photo taken September 12, 2016





## September 2016 Progress

➤ Photo taken September 22, 2016





## September 2016 Progress

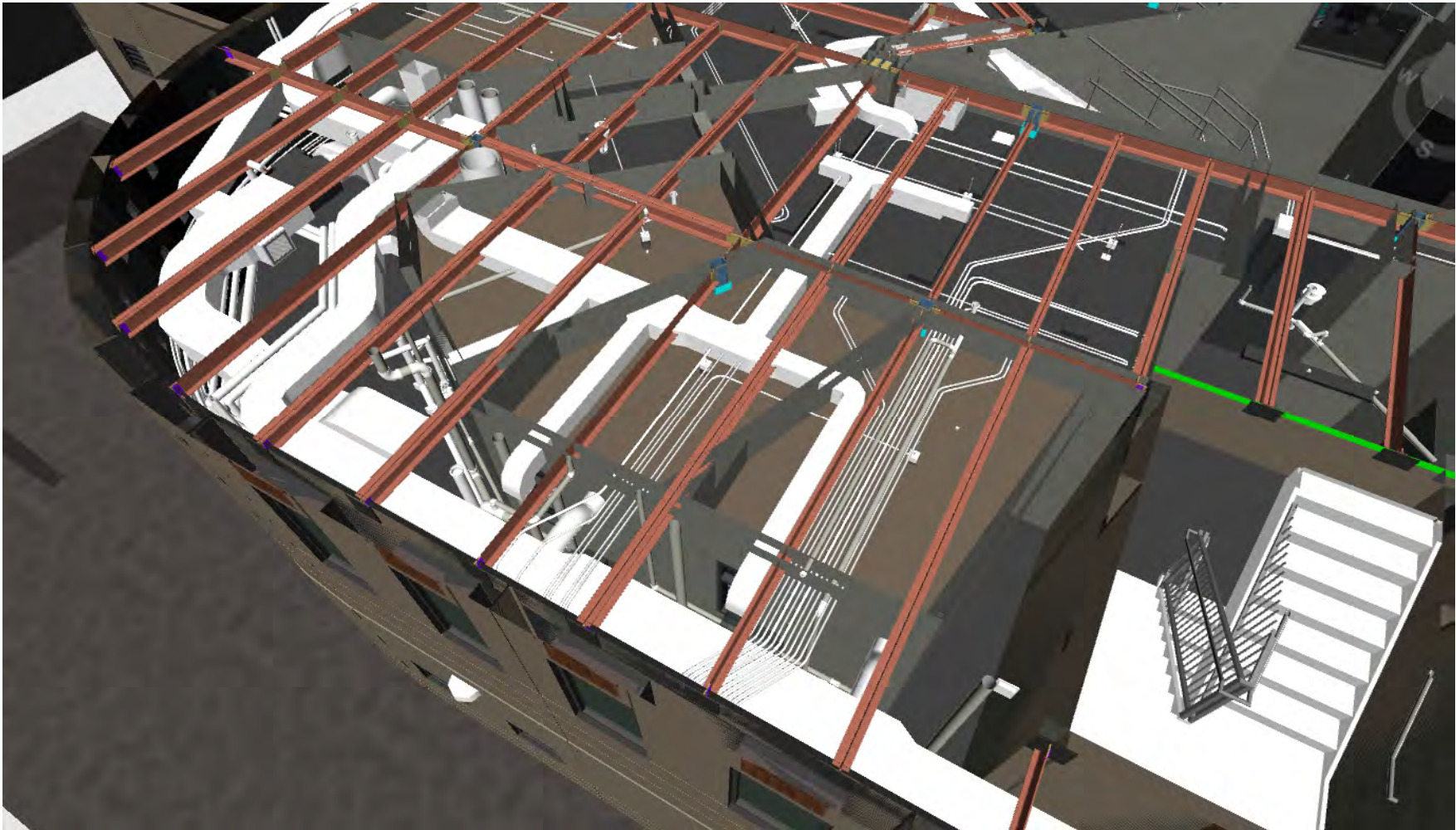
➤ Photo taken September 29, 2016





## September 2016 Progress

### ➤ 2<sup>nd</sup> Floor 3D Modeling Screenshot



## Precast Plant Tour – September 21<sup>st</sup>, 2016



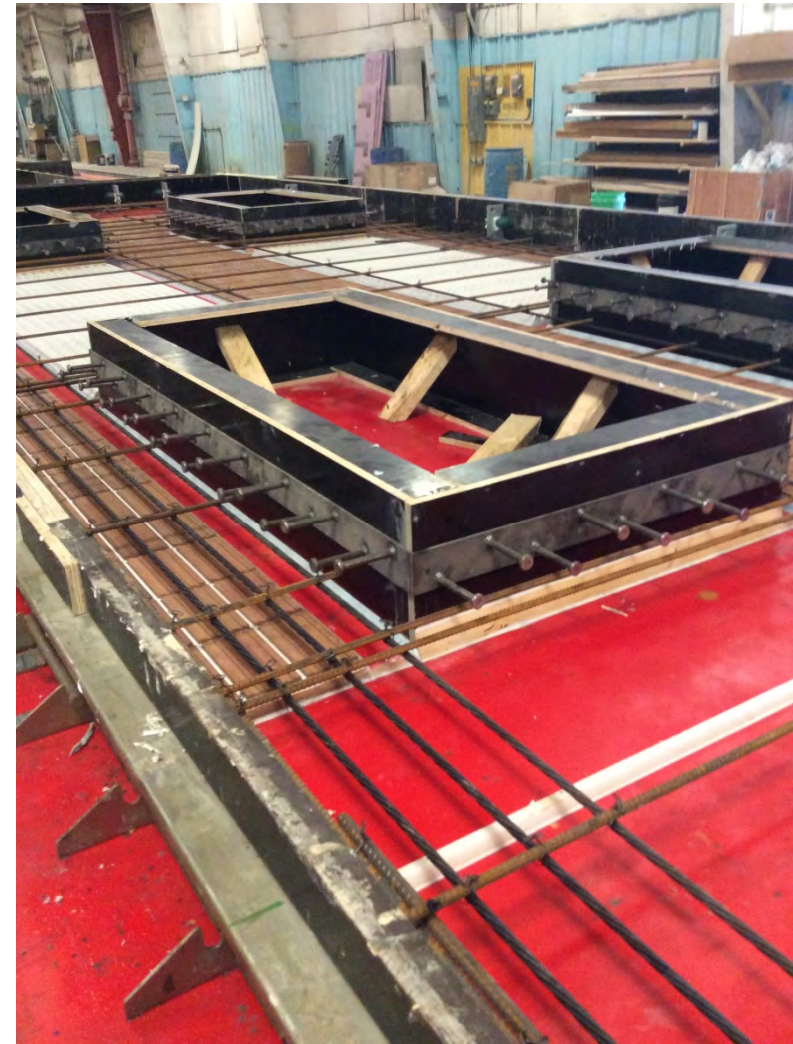
Panel #11W-069 North Elevation Alongside East Stairwell



## Precast Plant Tour Continued



Panel 11W-001 Ready for Pour



Steel Embeds for Detention Windows

## Precast Plant Tour Continued

