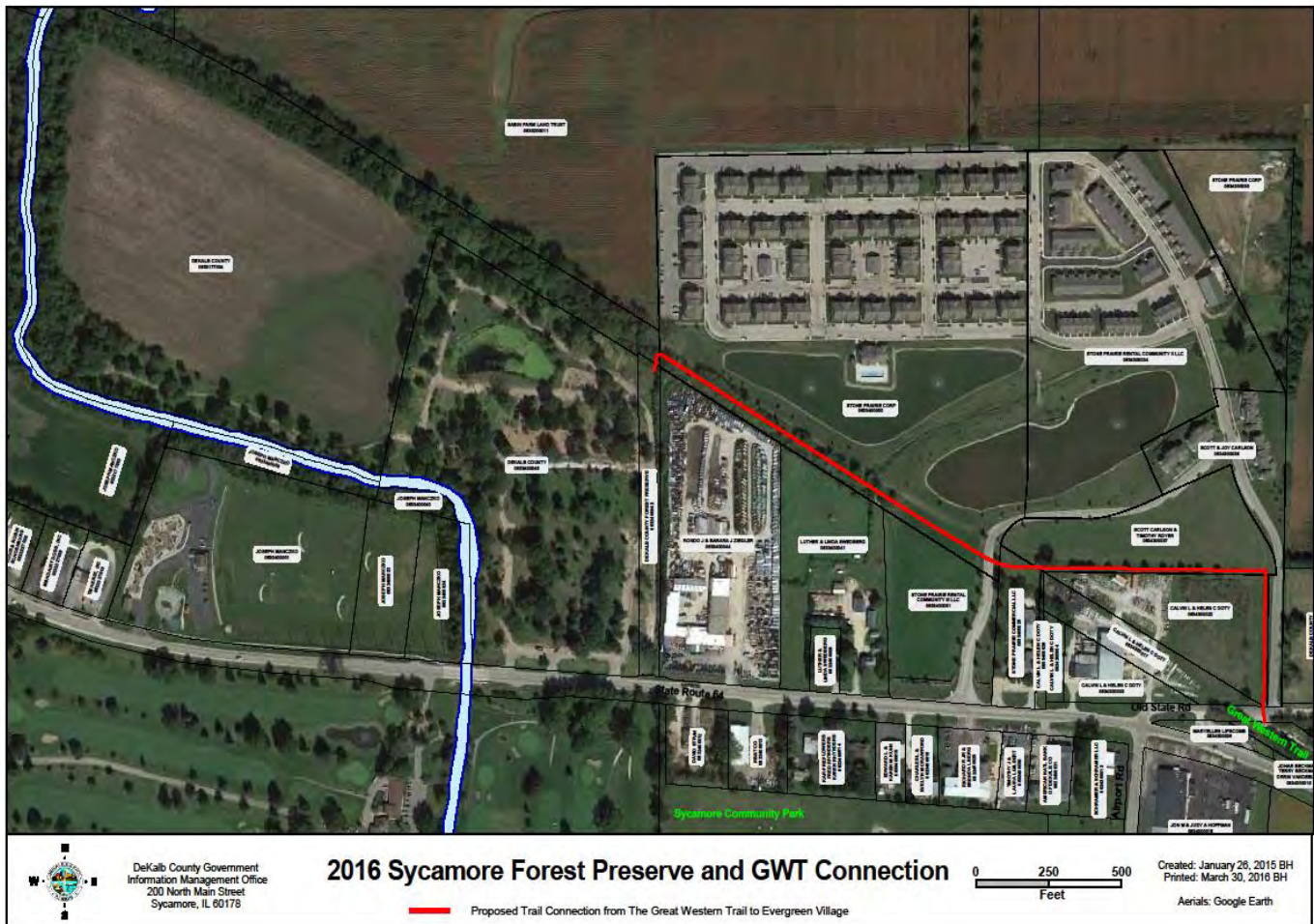


March 2016. Maintenance and safety checks of buildings and grounds, seasonal mowing, firewood cutting splitting and stacking, storm clean-up, shelter house and toilet cleaning, litter pick-up and disposal, road grading, trail maintenance, equipment maintenance, scheduling shelter rentals and collecting shelter and camping fees, drinking water sampling . Shelter houses and Lodge are used every weekend by scouts, families and other groups. Natural Resource Center Educational Staff teaching school groups at Russell Woods and making classroom visits. PDRMA Risk Management and Loss Control review and preserve safety in progress for 2016 compliance.



The Great Western Trail will connect west to the new Sycamore Forest Preserve through Stone Prairie apartment land (red line) . This asphalt paved trail connection was recently completed by Stone Prairie. Sycamore Park District is working on connecting trails into Sycamore parks, local business and schools.



This new forest preserve (former Evergreen Village mobile home park) will be named *Sycamore Forest Preserve* to honor the Sycamore community and named after the Sycamore tree that grows in floodplain areas. “Kishwaukee” is a Potawatomi word meaning “big tree” or “sycamore”. The east branch of the south branch of the Kishwaukee River flows northwest through this site.

Land improvements include:

2015

Mow future picnic areas and litter clean up.

2 herbicide treatments and weeds mowed on 30 acre former N.W. floodplain farmed area and plant wetland and prairie seed mix in winter 2015-2016.

Phase 1 Environmental Survey completed to assure no contamination issues.

2016 - 2017

Work on connecting the Great Western Trail to *Sycamore Forest Preserve*.

Remove dead trees and small “clumps” of trees in picnic areas and trim lower branches of trees to open up the view through the picnic areas. In the future plant Sycamore and Swamp White Oak trees in picnic areas.

Mow future picnic areas and litter clean up.

Develop picnic areas and green spaces. Construct 2 open air shelters

Improve parking areas near RT. 64 and develop trailhead near east parking area.

Improve access road to pond for fishing and picnic areas

Develop hiking and cross-country ski trails.

Plan on *Sycamore Forest Preserve* area open to public in late 2016 or 2017



PDRMA (Park District Risk Managementt Agency), the forest preserve district insurance and risk management provider, is very proactive in risk management practices including safe play areas at forest prreserves.

Pictured is a play area at Russell Woods.

March bird migrations bring many birds back to DeKalb County Forest Preserves. Local artist Pete Olson's work is shown here.





Forest Preserve staff conducting a controlled prairie burn at Afton's East prairie section

Illinois Smallmouth Bass Alliance donated a \$4,000 matching grant for stream bank stabilization and smallmouth bass habitat on the Kishwaukee River at the South Branch Prairie



The Kishwaukee Kiwanis and other student volunteers work on the annual DeKalb / Sycamore Trail clean up (most of the litter blows in from the Wal –Mart shopping center). The Sycamore Lions Club also completed their annual clean-up of 3 miles of the Great Western Trail.



March 2016-Completed Project List-Josh Clark

1. Prescribed fires took up a large portion of March. We had some good weather early and were able to get the spring fire season started early. The foamer units in the UTV's are a great asset. Details in Al's natural resource report.
2. Continued to clean and organize barns and shop areas at Sannauk, Afton and Shabbona.
3. Working on having consistency throughout the southern end of the district. Up till recently there were different colored garbage cans, sign mounting methods, information and in general a standard of care for each of the southern preserves. I have been working with the preserve managers to be consistent in the way we present the preserves to the public.
4. Equipment prep for the spring season.
5. Removed old shutters and installed new screen window covers on shelter #2 at Shabbona.
6. Installed new information boards at Afton (Parking lot #1 & #2) and at Sannauk (by west entrance).

Northern Forest Preserves Projects March – April 2016

- Entry Sign rebuild at Adee Woods
- Fresh painting of trash receptacles, lids, grills and wood stoves
- Shelter door construction, installation and painting
- Research cost estimates for new restrooms and Nature Center entry doors
- Sitting bench installations at Knute Olson Jr.
- Fresh mulching of playground areas and parking areas at Poto, Russell and Knute Olson
- Mowing
- Firewood supply
- Road repairs and grading
- Equipment and material support for Sycamore Forest Preserve staff
- Administrative Priorities as called for
- Safety investigation reporting and training
- Window repairs at Miller Elwood cabin
- Water well activation and testing