



DeKalb County Jail Expansion

November 1, 2016 Project Status Update

Project Status

- Submittal & RFI (Requests for Information) review ongoing
 - All major submittals for the building structure (concrete, precast, & steel) have now been approved.
 - Mechanical, Electrical, Plumbing, & Fire protection coordination is complete for the under slab, basement, & 1st floor work.
 - Coordination Work for the 2nd floor is approximately 85% complete.
 - Coordination Work for the 3rd floor is approximately 60% complete
 - Submittals are approximately 60% complete
 - 94 RFI's have been submitted to date
- Precast wall panel production is 75% complete
- Precast columns, beams, & plank are in production with first delivery November 2nd.
- Structural steel fabrication is 25% complete
- To date 35 Request For Pricing (RFP's), 11 Architects Supplemental Instructions (ASI's), & various other changes have been issued.

October 2016 Progress

- Concrete & reinforcing has been placed for about 90% of footings
- Concrete foundation walls are about 80% complete.
- Foundations for the Sallyport are underway
- Bottom 4ft of foundation wall has been waterproofed
- Backfill & drain tile are underway around the exterior wall up to 4ft
- Underground sanitary sewer & drain tile complete in the west basement

October 2016 Progress

➤ Photo taken October 7, 2016



October 2016 Progress

➤ Photo taken October 12, 2016



October 2016 Progress

➤ Photo taken October 20, 2016



October 2016 Progress

➤ Photo taken October 28, 2016



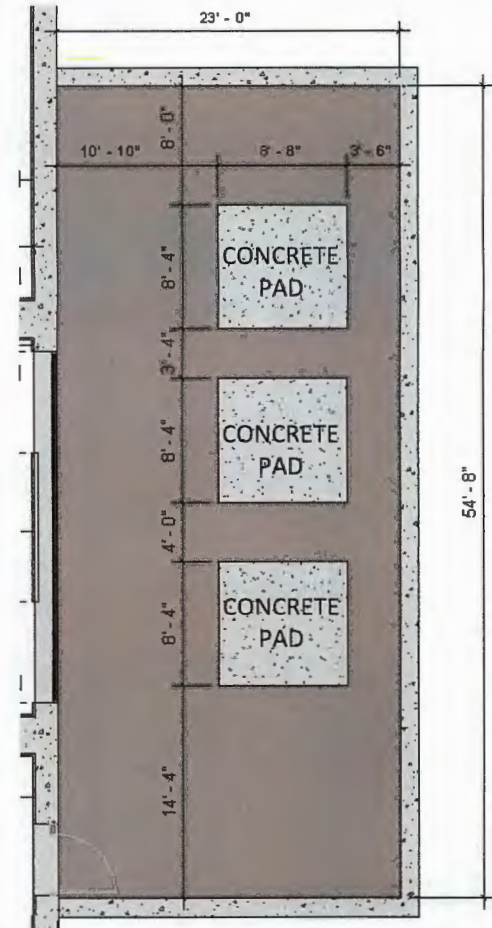
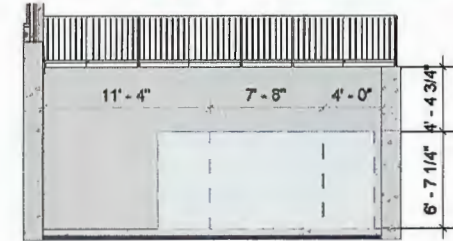
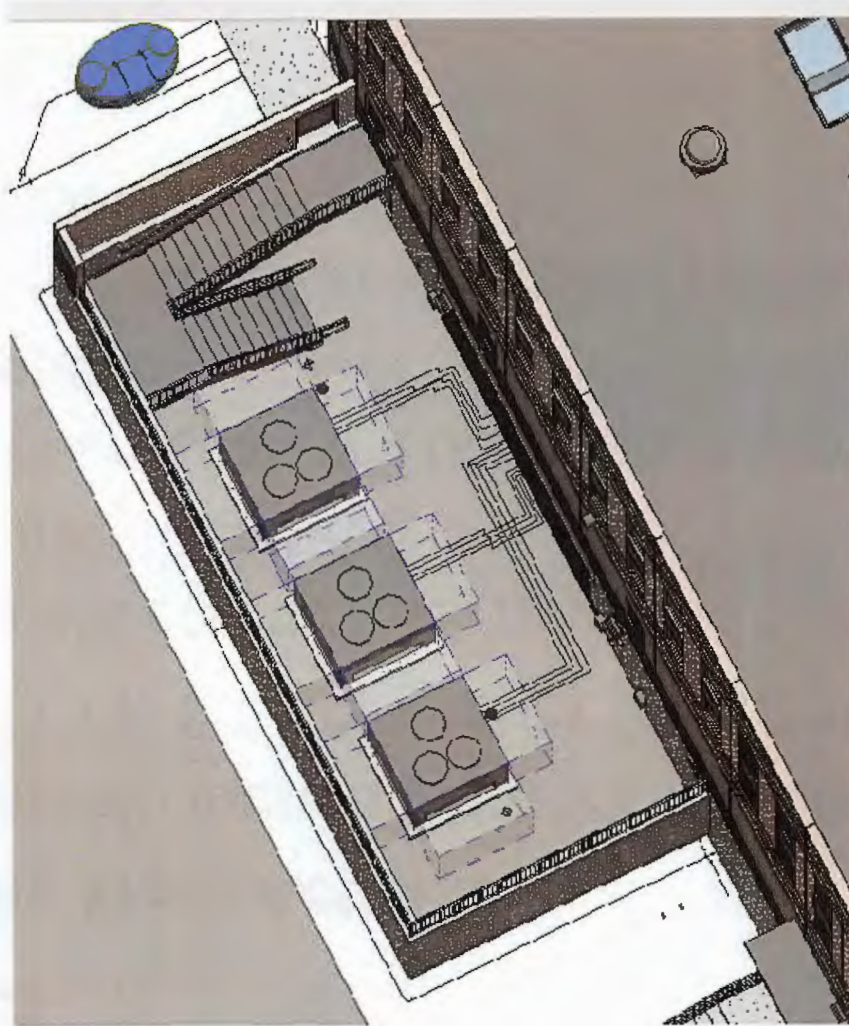
Condensing Units in Area Well

With that much additional space I believe you will be OK, but I don't have a way to model it to provide a guarantee that there would be no issues. With the wall being 11 feet all the way around, there is always a chance that recirculation could occur.

- Jack Dunn, Habegger Corp

It appears there is adequate space for air circulation and all the manufacturer's clearances have been met. We could potentially install a baffle plate between the units to direct hot exhaust air up to reduce recirculation if there is an issue. We have asked the manufacturer's representative for a potential fix we can share with the client in case we find out next summer air recirculation is occurring. We're waiting for their reply.

- John Fleming, Dewberry Engineer



Area Well Dimensions